



Lisle-Woodridge Fire Protection District Emergency Medical Services Division

James Weaver, EMS Coordinator

April Report

EVENTS

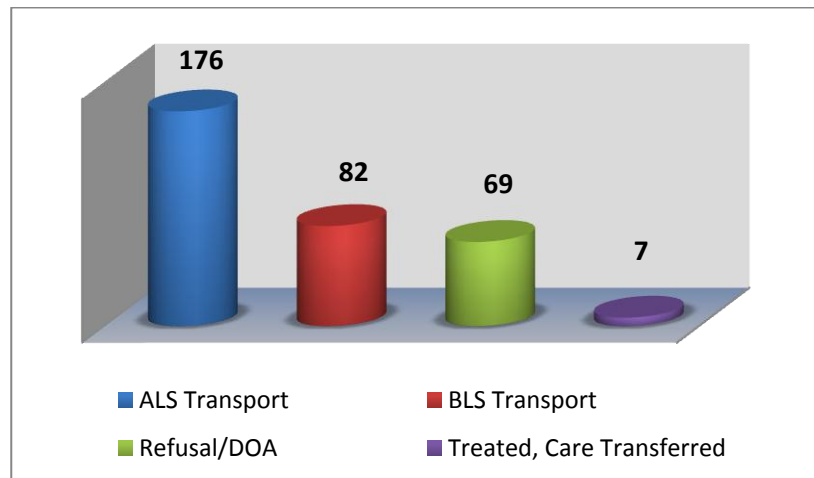
- Medic hire back for Morton Arboretum 10K Race
- Medic hire back for Chicago Red Stars Soccer
- Medic standby for Benedictine 5K race
- Zoll AutoPulse demonstration for SunCoke Energy
- CPR training for public
- 911 lecture for the Devonshire residents

TRAINING

- Addictions and Opiates
- CE Make up
- Quarterly Intubations
- Cyano Kit Scenario/Refresher
- Billing and software



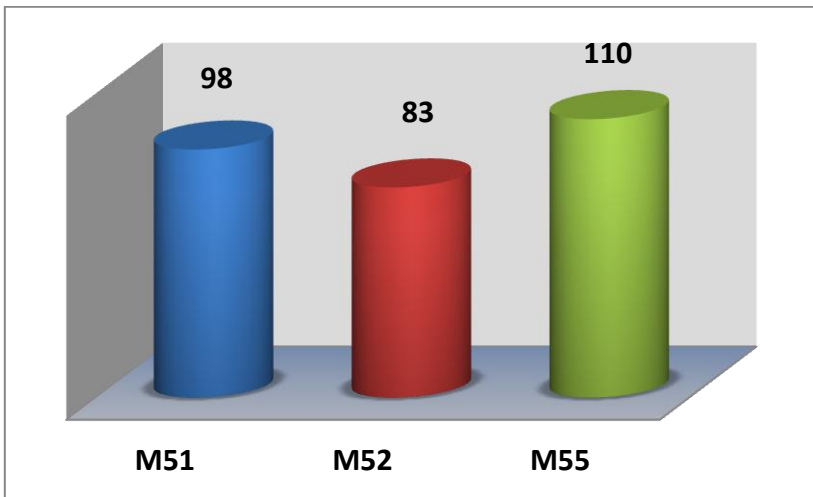
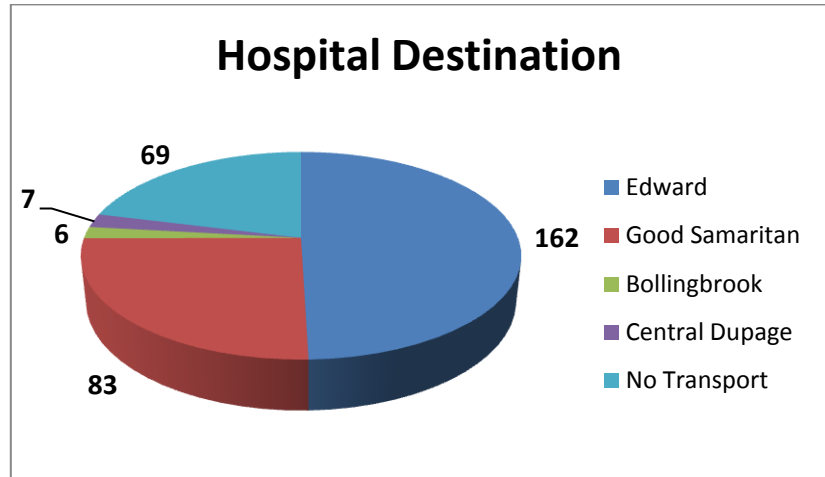
Our primary type of care and transport was Advanced Life Support (ALS). We responded 2 times to other towns to assist them with transporting patients to the hospital. In return, they came and transported for us 7 times.



Top 5 Incident Types

Sick Person	52
Traffic Accidents	41
Psychiatric/Suicide Attempt	34
Fall/Back Injury	33
Breathing Problems	24

Patients have the option to be transported to any of the four hospitals. Edward Hospital was our primary transport hospital with 162 transports.



M55 reported more calls once again this month compared to M51 and M52. These reports include Transport and Refusal/DOA.

Our Non-Transport ALS vehicles reported a total of 36 EMS calls. These calls were for Refusals, DOA's, Treated and Care Transferred.

