



Lisle-Woodridge Fire Protection District Emergency Medical Services Division

James Weaver, EMS Coordinator

April 2015

EVENTS

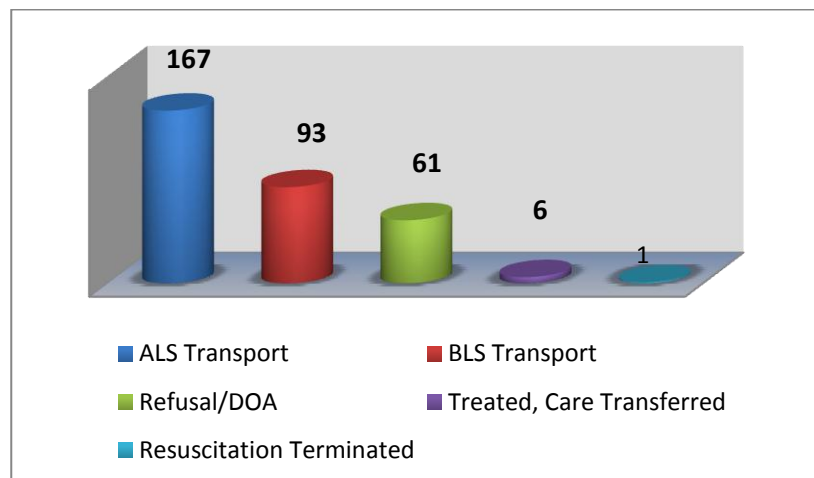
- Medic hire back for Chicago Red Stars Soccer
- Medic hire back for Morton Arboretum 10K Race
- Medic hire back for Benedictine 5K race
- CPR training for Trustee & Commissioners

TRAINING

- CE – Different Strokes
- Spinal Motion Restriction
- Quarterly Intubations
- SOP/System policy daily training
- American Heart Association Training Center training



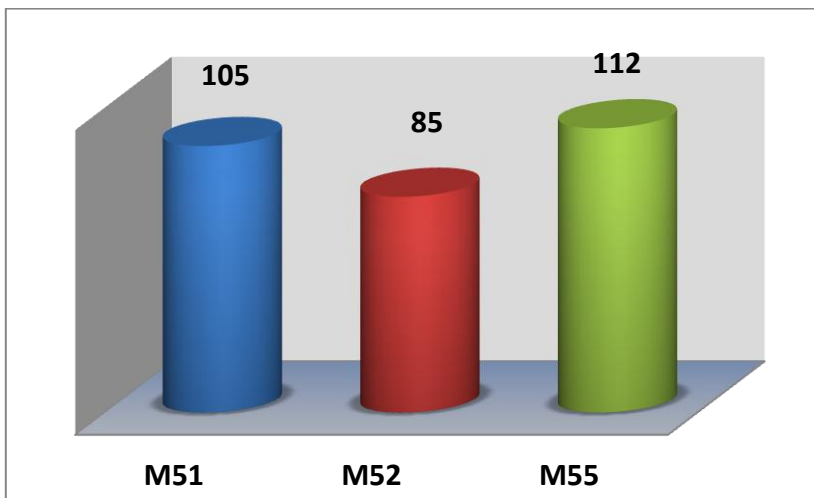
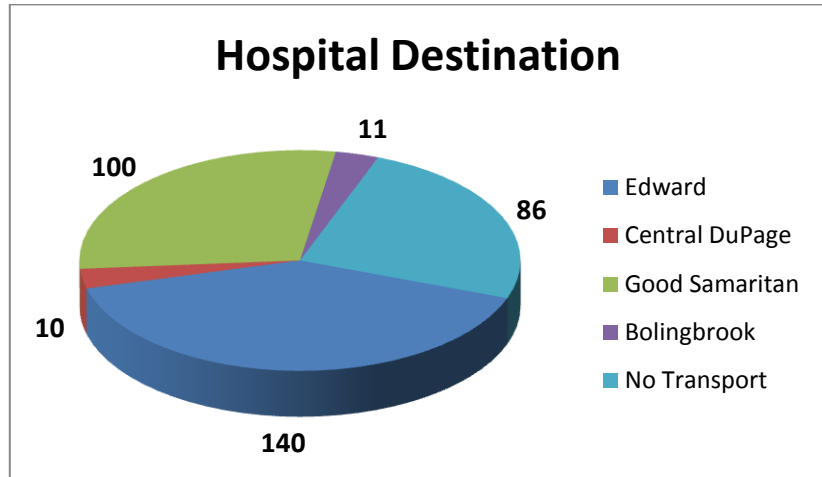
Our primary type of care and transport was Advanced Life Support (ALS). We responded 3 times to other towns to assist them in transporting patients to the hospital. In return, we had Mutual-Aid ambulances transport 6 times for us as all of our ambulances were committed to transporting patients.



Top 5 Incident Types

Sick Person	55
Fall /Back Injury	39
Psychiatric/Suicide Attempt	29
Unconscious/Fainting	26
Breathing Problems	24

Patients have the option to be transported to any of the four hospitals. Edward Hospital was our primary transport hospital with 140 transports.



M55 documented more calls this month compared to M51 and M52. These reports include Transport, Mutual Aid Transport and Refusal/DOA's.

Our Non-Transport ALS vehicles documented a total of 26 EMS calls. These calls were for Refusals, DOA's, Treated and Care Transferred.

