



Lisle-Woodridge Fire Protection District Emergency Medical Services Division

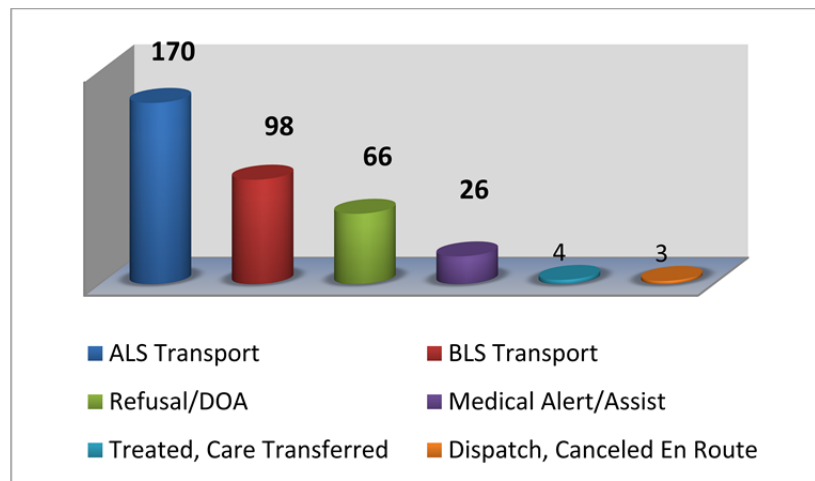
James Weaver, EMS Coordinator

April 2016

EVENTS

- Ambulance standby for Benedictine 5 K race
- Ambulance standby for Morton Arboretum 10 K race
- Ambulance standby for Ronald McDonald 10 K race
- Citizen CPR training

The Lisle-Woodridge Fire District had a total of 367 EMS calls for the month. Our primary type of care and transport was Advanced Life Support (ALS). We responded 1 time to other towns to assist them in transporting patients to the hospital. In return, we had Mutual-Aid ambulances come and transport 4 times for us as all of our ambulances were committed to transporting patients.



TRAINING

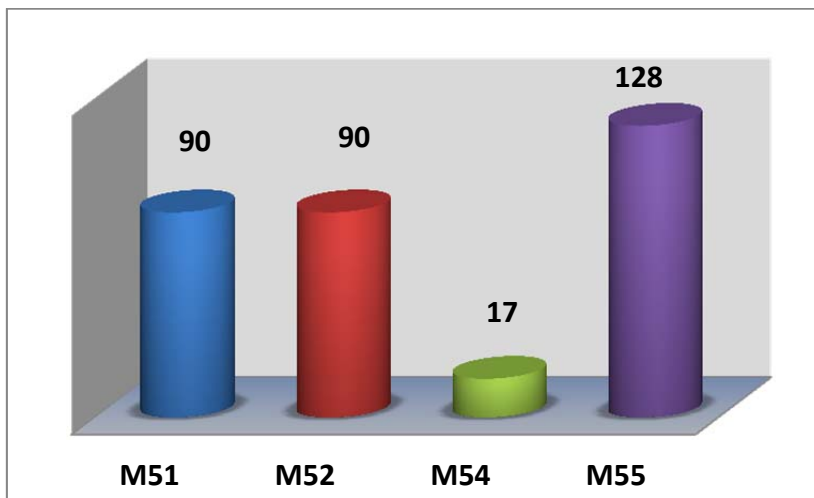
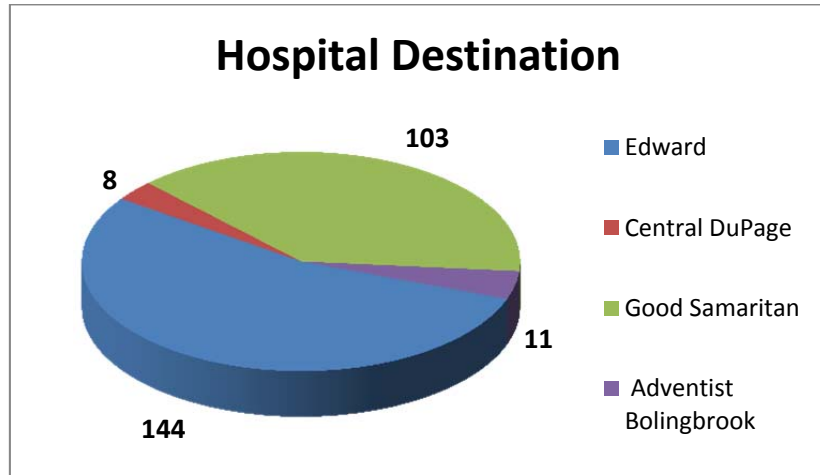
- CE – 2016 SOP review
- Quarterly Intubations
- Sim-man Scenarios

Top 5 Incident Types

Sick Person	39
Fall /Back Injury	36
Psychiatric/Suicide Attempt	33
Traffic Accidents	31
Unconscious/Fainting	25



Patients have the option to be transported to any of the four hospitals. Edward Hospital was our primary transport hospital with 144 transports.



M55 documented more calls again this month compared to M51 and M52. M54 is a jump company when M51 is not in service. These reports include Transport, Mutual Aid Transport, Refusal/DOA's, Medical Alert/Citizen Assist and Dispatch/Canceled En Route.

Our Non-Transport ALS vehicles documented a total of 41 EMS calls. These reports include Transport, Mutual Aid Transport, Refusal/DOA's, Medical Alert/Citizen Assist and Dispatch/Canceled En Route. Downers Grove Medic 5 handled a Citizen Assist while we were tied up at a fire.

