



# Lisle-Woodridge Fire Protection District Emergency Medical Services Division

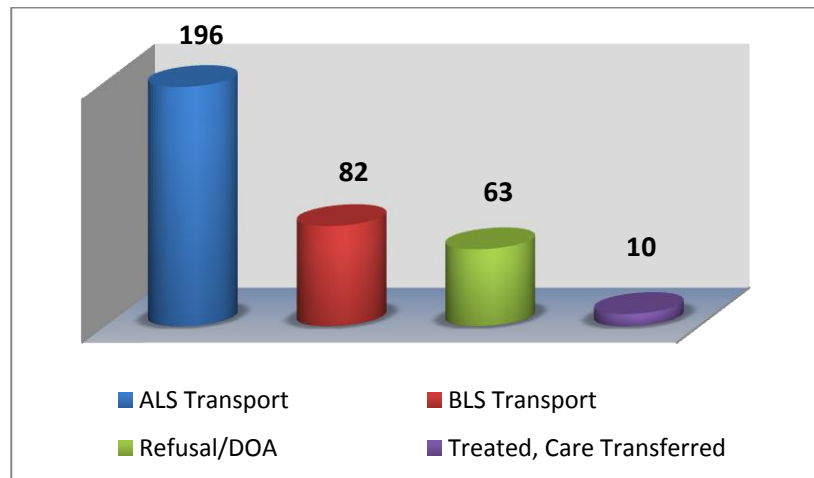
James Weaver, EMS Coordinator

## December 2014

### EVENTS

- Medic hire back for Benedictine commencement ceremony

Our primary type of care and transport was Advanced Life Support (ALS). We did not respond to other towns to assist them in transporting patients to the hospital. We did have the other towns come and transport 10 times for us as all of our ambulances were committed to transporting patients.



### TRAINING

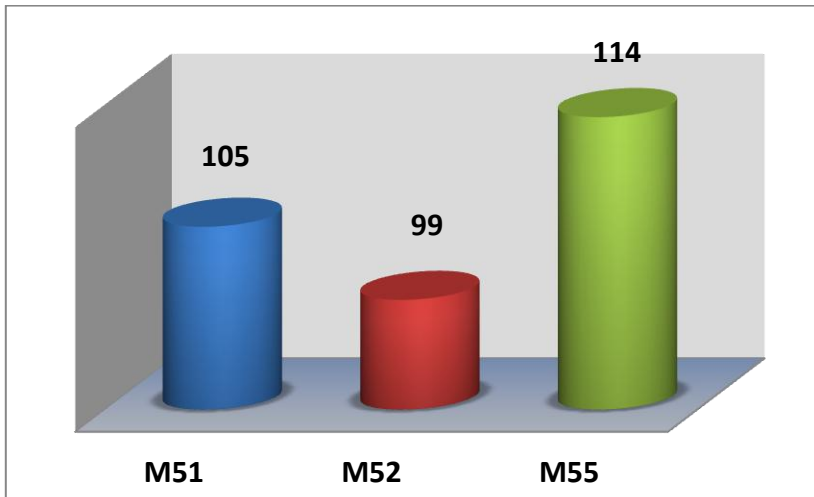
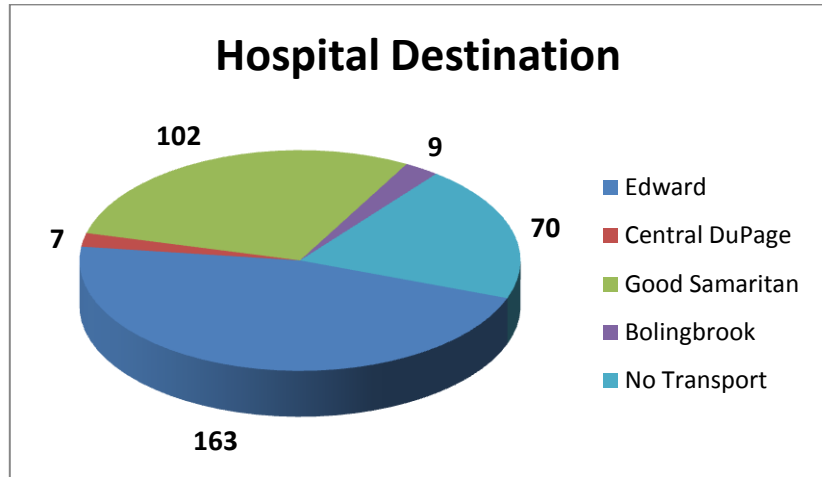
- CE Make up
- Quarterly Intubations

### Top 5 Incident Types

Sick Person	46
Traffic Accidents	43
Fall /Back Injury	38
Breathing Problems	25
Psychiatric/Suicide Attempt	29



Patients have the option to be transported to any of the four hospitals. Edward Hospital was our primary transport hospital with 163 transports.



M55 documented more calls this month compared to M51 and M52. These reports include Transport, Mutual Aid Transport and Refusal/DOA's.

Our Non-Transport ALS vehicles documented a total of 33 EMS calls. E53 responded to 1 call due to T53 being out of service. These calls were for Refusals, DOA's, Treated and Care Transferred.

