



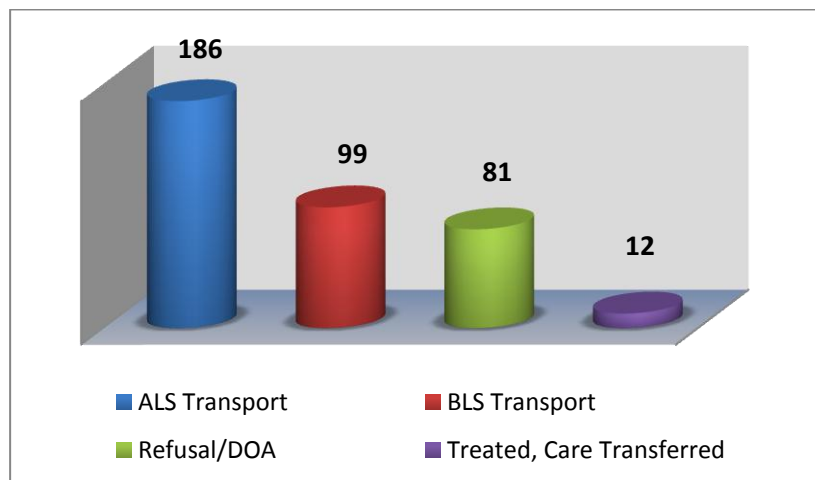
# Lisle-Woodridge Fire Protection District Emergency Medical Services Division

James Weaver, EMS Coordinator

## December 2015

### EVENTS

Our primary type of care and transport was Advanced Life Support (ALS). We responded 2 times to other towns to assist them in transporting patients to the hospital. In return, they came and transported for us 12 times due to our ambulances being on other emergency calls.



### TRAINING

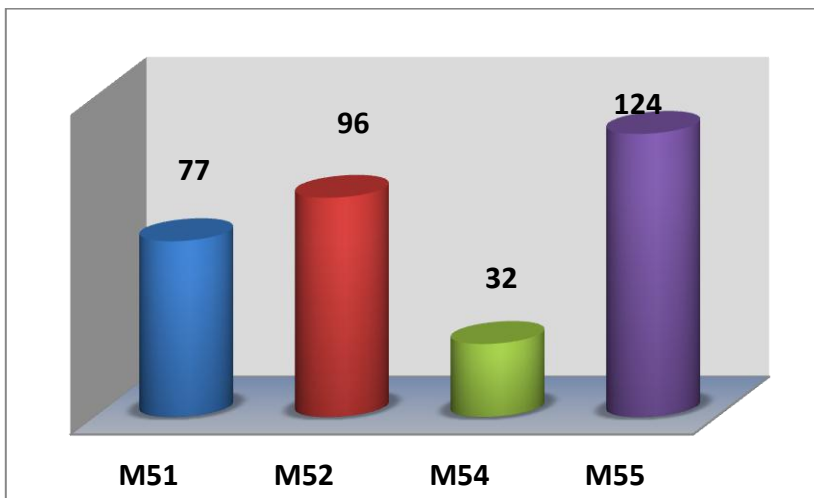
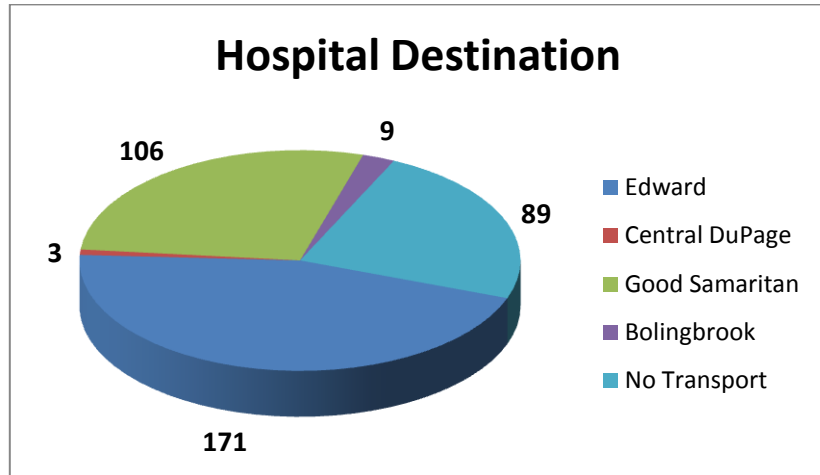
- Bloodborne Pathogen
- CE Make up
- Quarterly Intubations



### Top 5 Incident Types

Fall /Back Injury	54
Traffic Accidents	50
Sick Person	42
Breathing Problems	36
Psychiatric/Suicide Attempt	31

Patients have the option to be transported to any of the four hospitals. Edward Hospital was our primary transport hospital with 171 transports.



M55 documented more calls this month compared to M51 and M52. M54 is utilized as a Jump Company. These reports include Transport and Refusal/DOA.

Our Non-Transport ALS vehicles documented a total of 49 EMS calls. These calls were for Refusals, DOA's, Treated and Care Transferred.

