

February 2014

Monthly Report



Medic Unit Activity

EMS Events

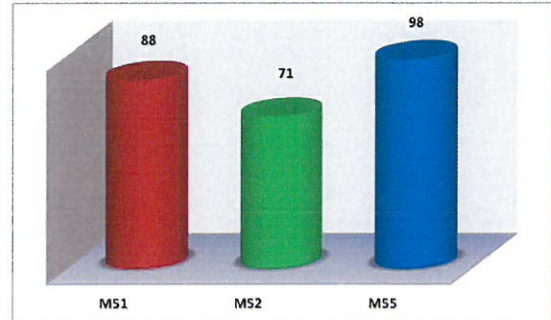
- Provided CPR class for residents.
- New Medic 52 was placed into service.

The number of Sick Person calls were up from last month.

Medic 55 remained the busiest ambulance with the most transports.

Top 5 Incident Types

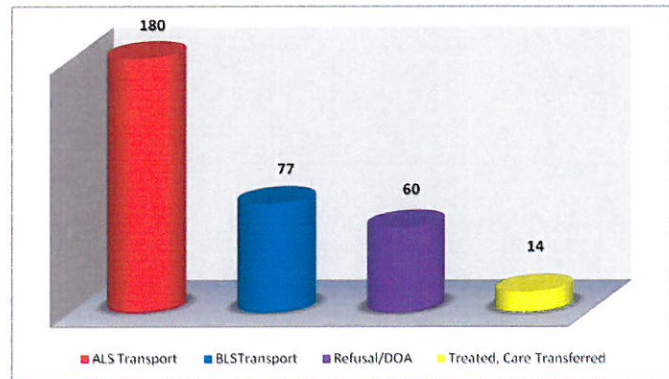
Sick Person	57
Traffic Accidents	55
Fall/Back Injury	49
Breathing Problems	27
Chest Pain	21



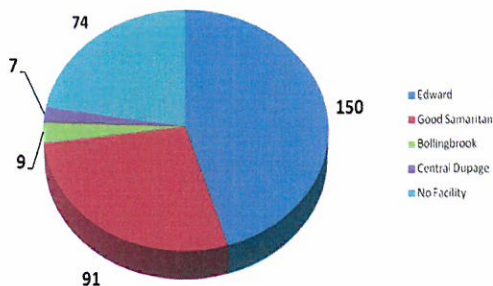
Outcome Summary

Our primary source of transports remain ALS. We transported 2 ALS patients other towns, and in return our Mutual Aid ambulances transported 14 of our patients.

Total number of transports for February: 257



Hospital Destination



Hospital Destination

Edward Hospital received the majority of our patients this month. This is based on patients request as to which hospital they would like transported to.

Training Topics

- **EHEMSS Training**
 - Cardiac Review
 - 1st QTR Intubations
- Region 8 and Edward System Meetings
- EMS Coordinators Meeting