



# Lisle-Woodridge Fire Protection District Emergency Medical Services Division

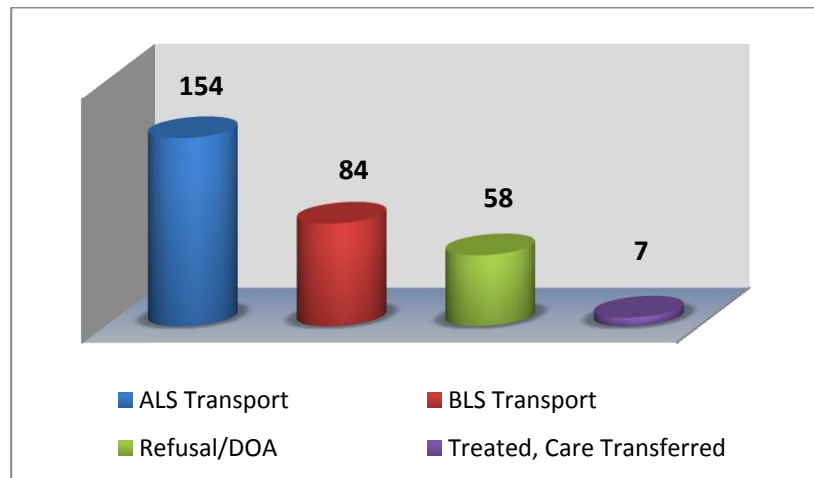
James Weaver, EMS Coordinator

## February 2015

### EVENTS

- Illinois Department of Public Health annual ambulance inspections
- New M51 went into service
- CPR training for DuPage Double's group.

Our primary type of care and transport was Advanced Life Support (ALS). We responded 2 times to other towns to assist them in transporting patients to the hospital. In return, we had Mutual-Aid ambulances come and transport 7 times for us as all of our ambulances were committed to transporting patients.



### TRAINING

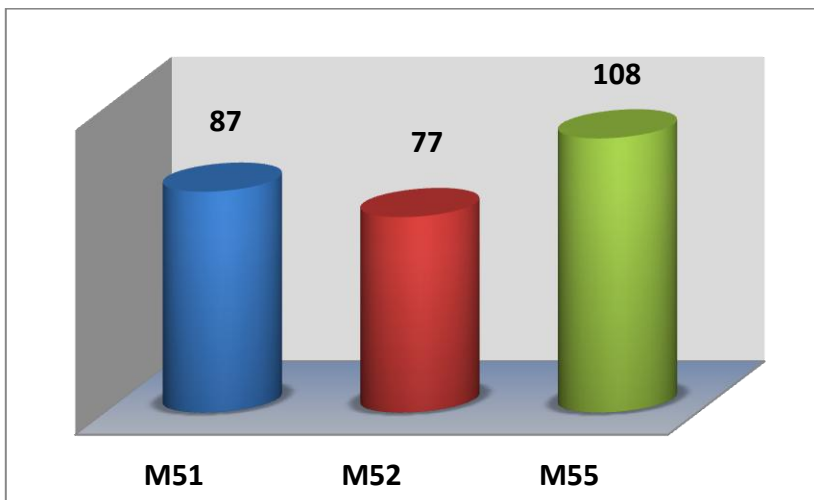
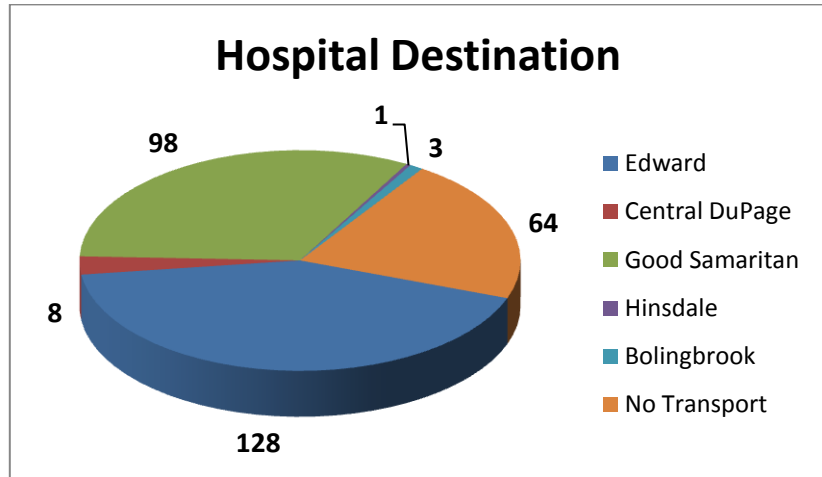
- CE – Blast Injuries
- Spinal Immobilization
- Quarterly Intubations

### Top 5 Incident Types

Traffic Accidents	48
Sick Person	46
Fall /Back Injury	38
Breathing Problems	23
Psychiatric/Suicide Attempt	22



Patients have the option to be transported to any of the four hospitals. Edward Hospital was our primary transport hospital with 128 transports. We transported to Hinsdale Hospital 1 time while we were called to help out another department.



M55 documented more calls this month compared to M51 and M52. These reports include Transport, Mutual Aid Transport and Refusal/DOA's.

Our Non-Transport ALS vehicles documented a total of 27 EMS calls. These calls were for Refusals, DOA's, Treated and Care Transferred.

