



Lisle-Woodridge Fire Protection District Emergency Medical Services Division

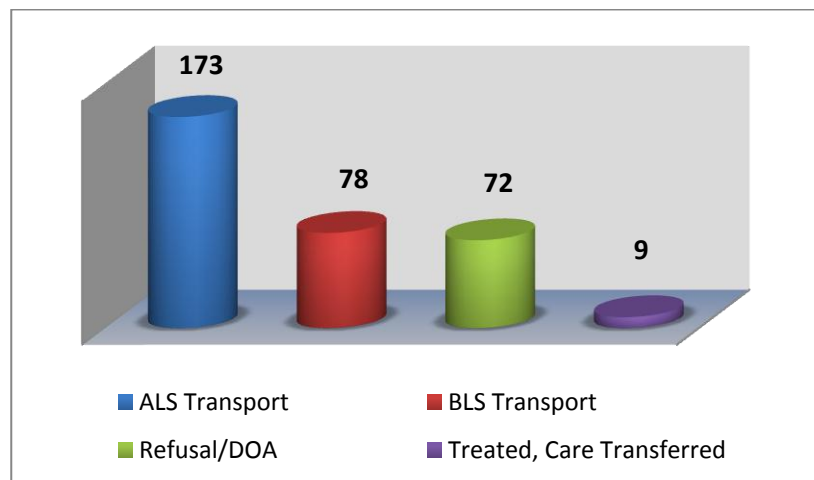
James Weaver, EMS Coordinator

February 2016

EVENTS

- IDPH Ambulance Inspections

Our primary type of care and transport was Advanced Life Support (ALS). We responded 4 times to other towns to assist them in transporting patients to the hospital. In return, we had Mutual-Aid ambulances come and transport 9 times for us as all of our ambulances were committed to transporting patients.



TRAINING

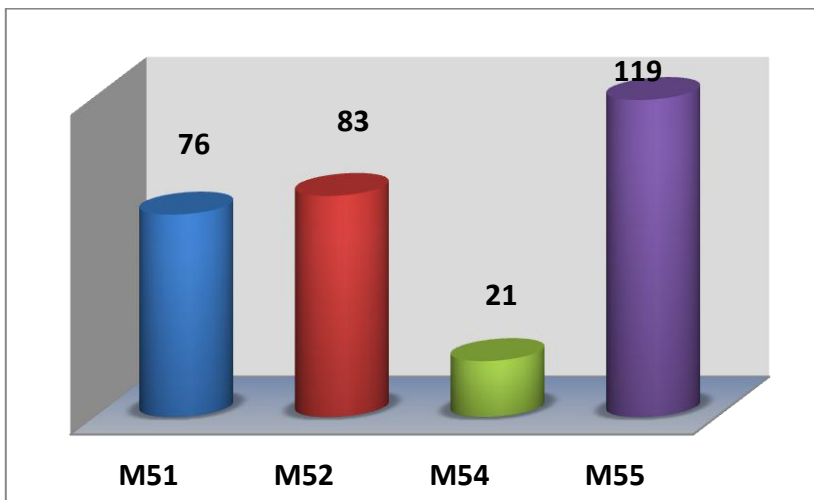
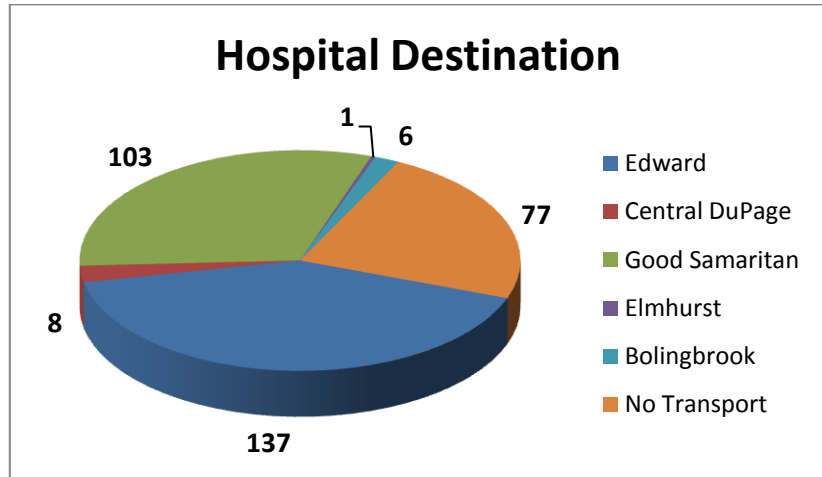
- CE – Cardiac Emergencies
- Quarterly Intubations
- New CE testing program



Top 5 Incident Types

Sick Person	55
Traffic Accidents	50
Breathing Problems	39
Fall /Back Injury	29
Psychiatric/Suicide Attempt	24

Patients have the option to be transported to any of the four hospitals. Edward Hospital was our primary transport hospital with 137 transports. We transported to Elmhurst Hospital One time while responding Mutual Aid.



M55 documented more calls again this month compared to M51 and M52. M54 is a jump company when M51 is not in service. These reports include Transport, Mutual Aid Transport and Refusal/DOA's.

Our Non-Transport ALS vehicles documented a total of 33 EMS calls. These calls were for Refusals, DOA's, Treated and Care Transferred.

