



Lisle-Woodridge Fire Protection District Emergency Medical Services Division

James Weaver, EMS Coordinator

July 2014

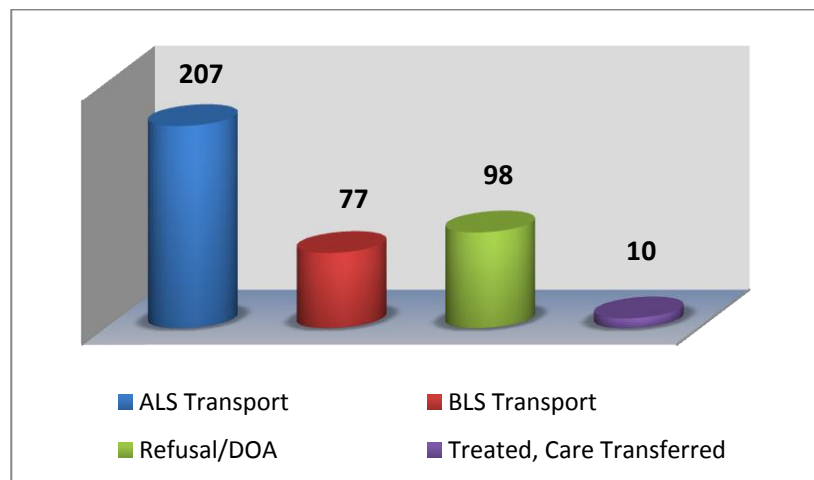
EVENTS

- Medic hire back for Chicago Red Stars Soccer
- Medic hire back for Cavalcade of Brass
- CPR training for the public
- Active Shooter drill at Midwest College Downers Grove
- Non-Transport Inspections

TRAINING

- New Hire Training
- CE - 2014 SOP Update training
- CE Make up
- Quarterly Intubations

Our primary type of care and transport was Advanced Life Support (ALS). We responded 1 time to other towns to assist them in transporting patients to the hospital. In return, they came and transported for us 10 times.

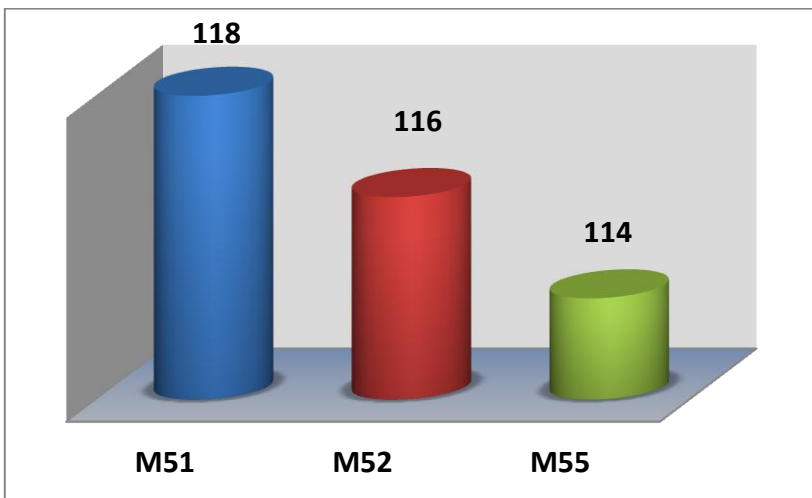
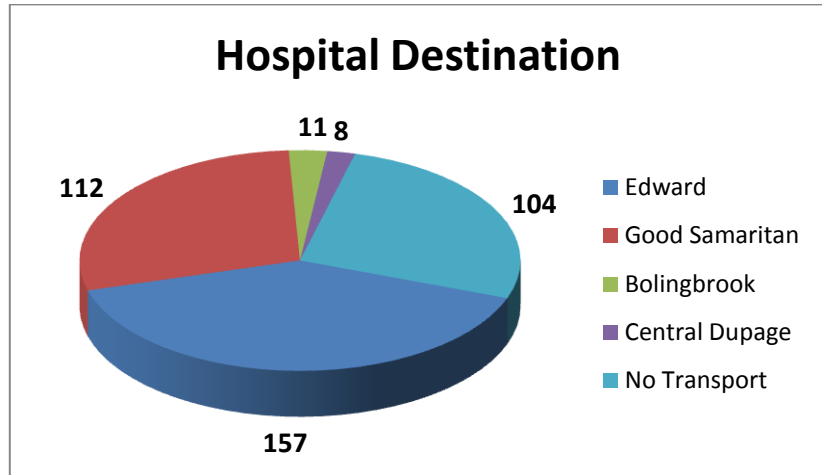


Top 5 Incident Types

Traffic Accidents	92
Sick Person	45
Fall/Back Injury	43
Unconscious/Fainting	28
Breathing Problems	24



Patients have the option to be transported to any of the four hospitals. Edward Hospital was our primary transport hospital with 157 transports.



M51 reported more calls once again this month compared to M52 and M55. These reports include Transport and Refusal/DOA.

Our Non-Transport ALS vehicles reported a total of 43 EMS calls. These calls were for Refusals, DOA's, Treated and Care Transferred.

