



Lisle-Woodridge Fire Protection District Emergency Medical Services Division

James Weaver, EMS Coordinator

July 2015

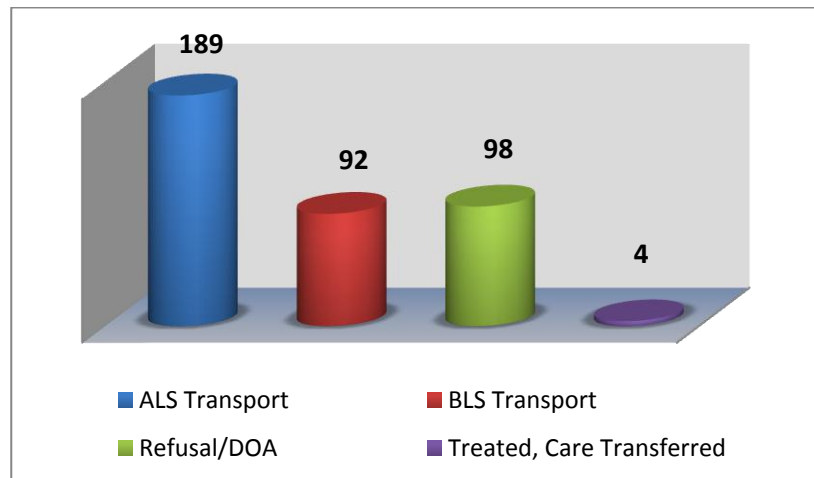
EVENTS

- Medic hire back for Chicago Red Stars Soccer
- CPR training for the public
- Medic hire back for Lisle Eyes to the Skies 2015
- Non-Transport Inspections

TRAINING

- CE – Street Drugs
- CE Make up
- Quarterly Intubations

Our primary type of care and transport was Advanced Life Support (ALS). We responded 7 times to other towns to assist them in transporting patients to the hospital. In return, they came and transported for us 4 times.

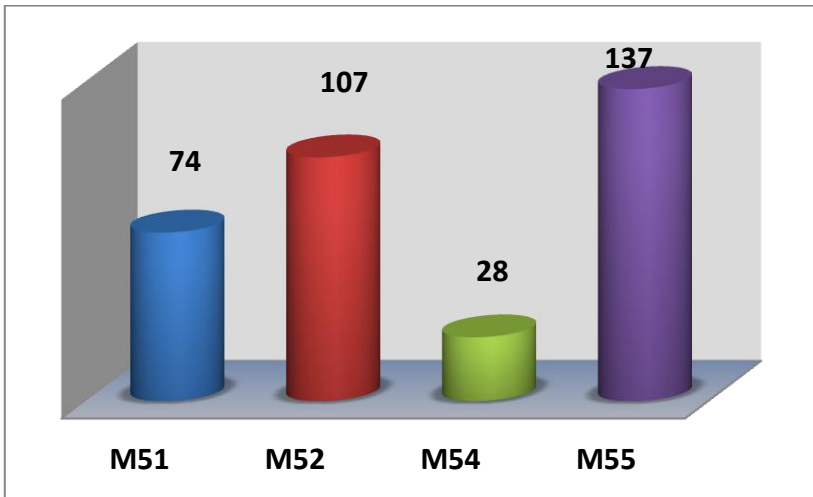
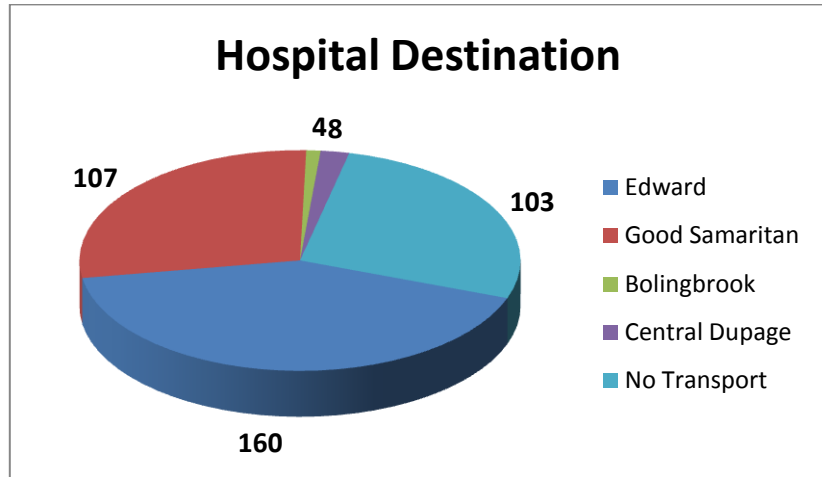


Top 5 Incident Types

Traffic Accidents	61
Fall/Back Injury	57
Sick Person	53
Unconscious/Fainting	32
Psychiatric/Suicide Attempt	24



Patients have the option to be transported to any of the four hospitals. Edward Hospital was our primary transport hospital with 160 transports.



M55 reported more calls this month compared to M51 and M52. We started utilizing M54 and E54 as a Jump Company. These reports include Transport and Refusal/DOA.

Our Non-Transport ALS vehicles reported a total of 37 EMS calls. These calls were for Refusals, DOA's, Treated and Care Transferred.

