



# Lisle-Woodridge Fire Protection District Emergency Medical Services Division

James Weaver, EMS Coordinator

## July 2016

### EVENTS

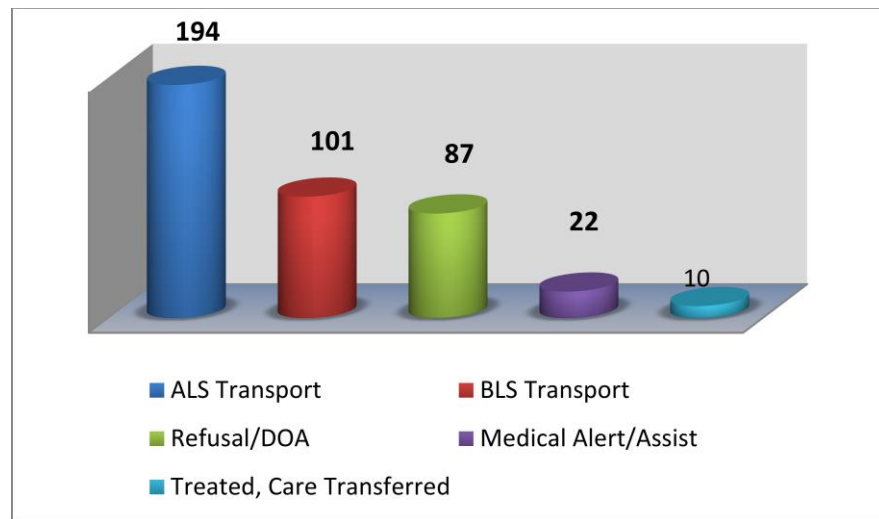
- Lisle Eyes to the Skies EMS Coverage
- Non-Transport Inspections

### TRAINING

- SOP/Policy Review
- CE – Dyspnea
- Quarterly Intubations



The Lisle-Woodridge Fire District had a total of 414 EMS calls for the month. Our primary type of care and transport was Advanced Life Support (ALS).



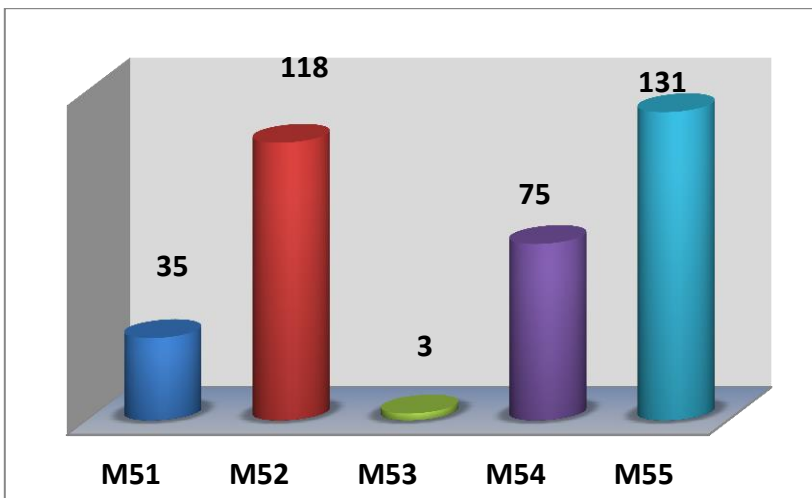
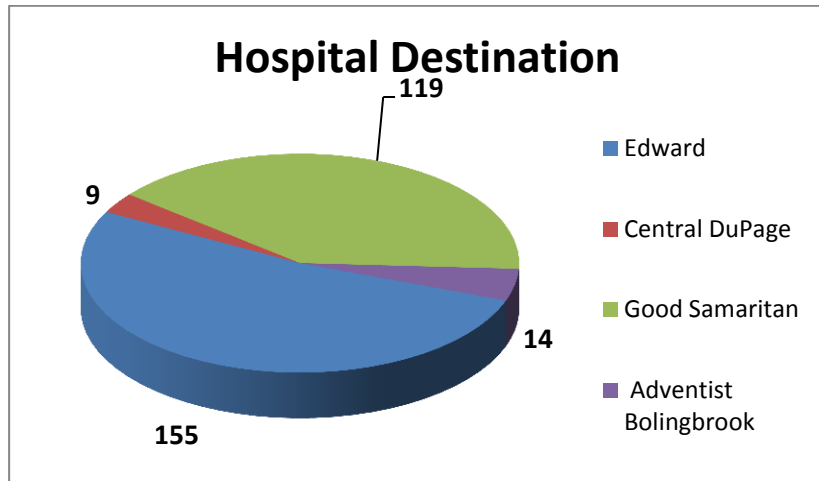
### Mutual Aid

Received	10	Given	1
----------	----	-------	---

### Top 5 Incident Types

Sick Person	56
Fall /Back Injury	56
Traffic Accidents	49
Breathing Problems	32
Psychiatric/Suicide	29

Patients have the option to be transported to any of the four hospitals. Edward Hospital was our primary transport hospital with 155 transports.



M55 documented more calls again this month compared to M51 and M52. M54 is a jump company when M51 is not in service. These reports include Transport, Mutual Aid Transport, Refusal/DOA's, Medical Alert/Citizen Assist and Dispatch/Canceled En Route.

Our Non-Transport ALS vehicles documented a total of 52 EMS calls. These reports include Transport, Mutual Aid Transport, Refusal/DOA's, Medical Alert/Citizen Assist and Dispatch/Canceled En Route.

