



# Lisle-Woodridge Fire Protection District Emergency Medical Services Division

James Weaver, EMS Coordinator

## June Report

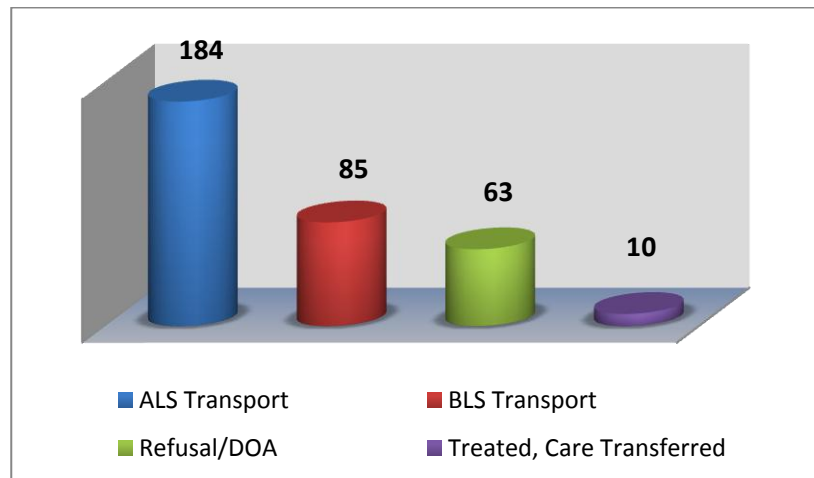
### EVENTS

- Medic hire back for Chicago Red Stars Soccer
- Medic hire back for Glenbard South Graduation Ceremonies
- CPR training for public

### TRAINING

- New Hire Training
- Zoll X Series Monitor In-service Training
- CE Make up
- Quarterly Intubations

Our primary type of care and transport was Advanced Life Support (ALS). We responded 2 times to other towns to assist them in transporting patients to the hospital. In return, they came and transported for us 10 times.

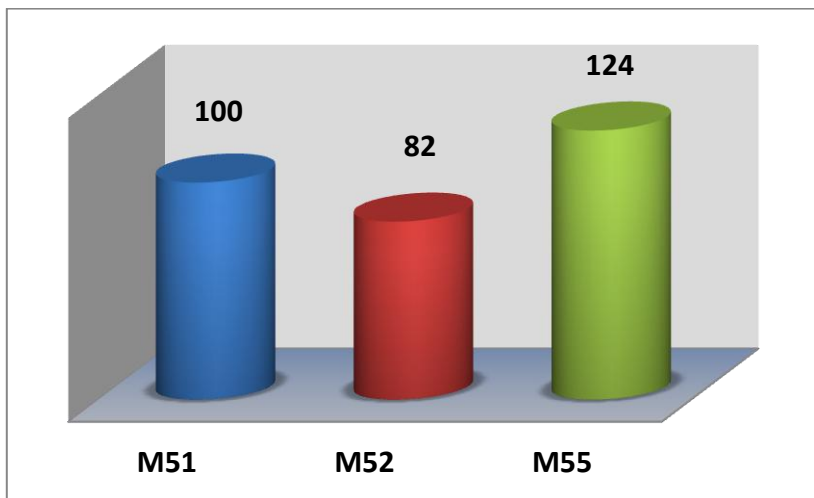
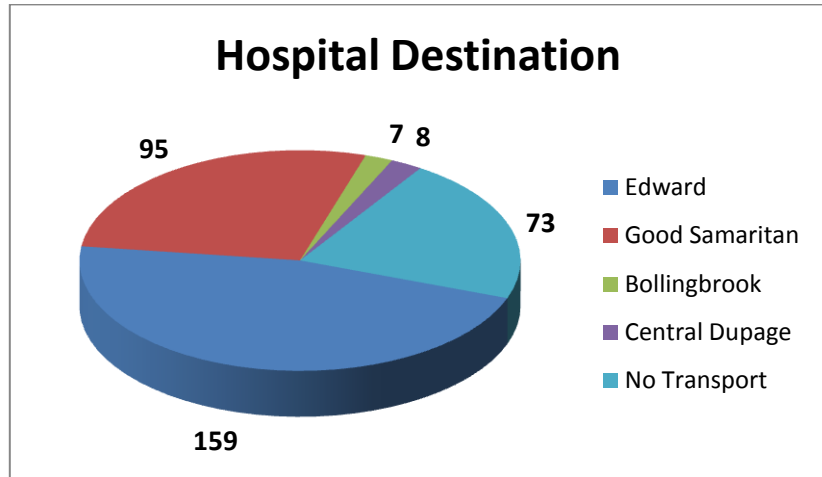


### Top 5 Incident Types

Traffic Accidents	44
Fall/Back Injury	33
Psychiatric/Suicide Attempt	36
Breathing Problems	31
Unconscious/Fainting	23



Patients have the option to be transported to any of the four hospitals. Edward Hospital was our primary transport hospital with 159 transports.



M55 reported more calls once again this month compared to M51 and M52. These reports include Transport and Refusal/DOA.

Our Non-Transport ALS vehicles reported a total of 32 EMS calls. These calls were for Refusals, DOA's, Treated and Care Transferred.

