



Lisle-Woodridge Fire Protection District Emergency Medical Services Division

James Weaver, EMS Coordinator

June 2015

EVENTS

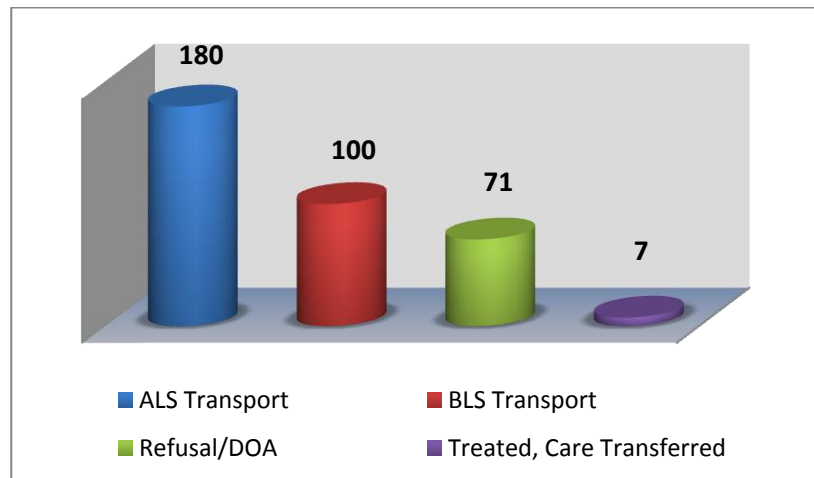
- Medic hire back for Chicago Red Stars Soccer
- Medic hire back for Cavalcade of Brass
- Duty Crew Standby for Woodridge Jubilee
- Duty crew standby for Chicago Symphony Orchestra at the Arboretum

TRAINING

- Quarterly Intubations
- SOP/System policy daily training
- CE – Make-up



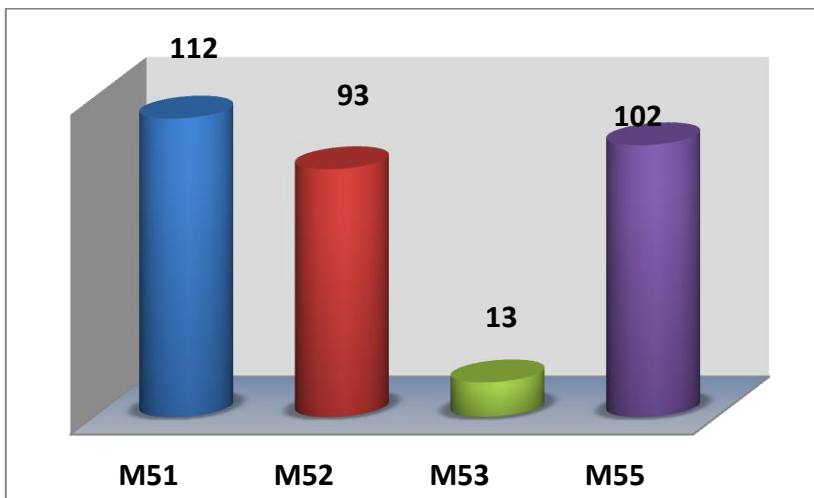
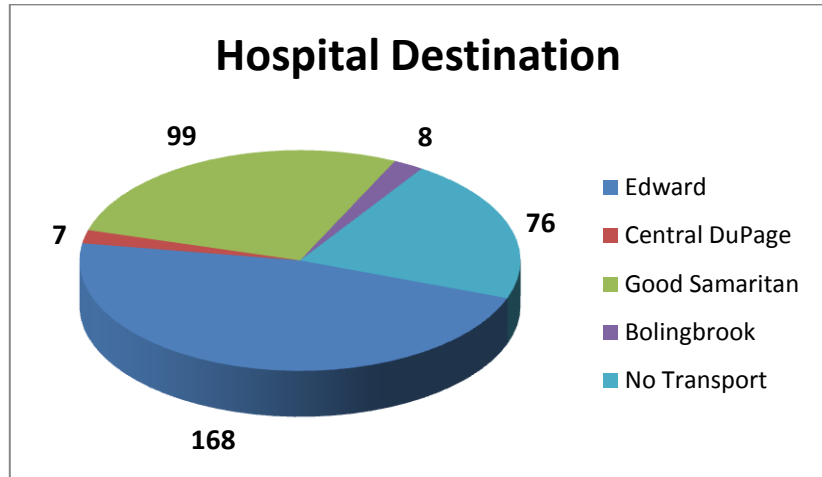
Our primary type of care and transport was Advanced Life Support (ALS). We responded 5 times to other towns to assist them in transporting patients to the hospital. In return, we had Mutual-Aid ambulances transport 7 times for us as all of our ambulances were committed to transporting patients.



Top 5 Incident Types

Traffic Accident	66
Sick Person	53
Fall /Back Injury	48
Psychiatric/Suicide Attempt	35
Breathing Problems	25

Patients have the option to be transported to any of the four hospitals. Edward Hospital was our primary transport hospital with 168 transports.



M51 documented more calls this month compared to M52 and M55. M53 was in service to cover the ambulances when they were down for maintenance. These reports include Transport, Mutual Aid Transport and Refusal/DOA's.

Our Non-Transport ALS vehicles documented a total of 38 EMS calls. These calls were for Refusals, DOA's, Treated and Care Transferred.

