



# Lisle-Woodridge Fire Protection District Emergency Medical Services Division

James Weaver, EMS Coordinator

## June 2016

### EVENTS

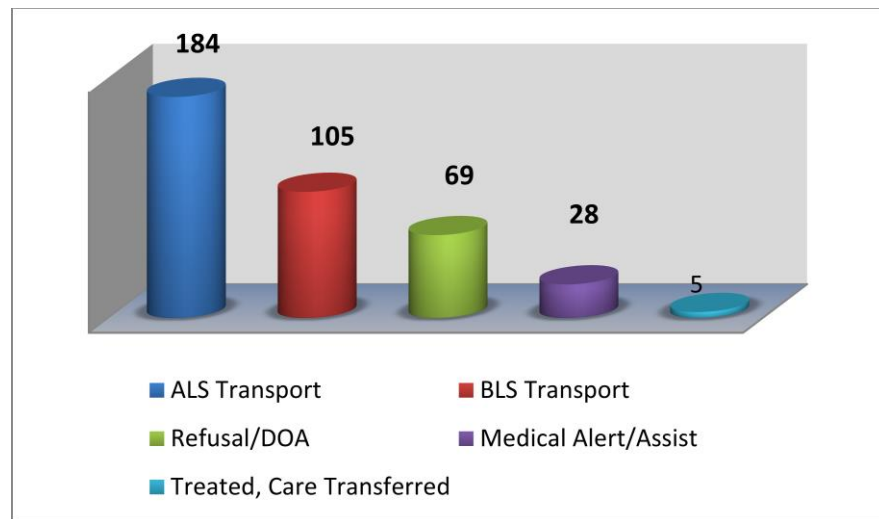
- Duty Crew standby for the Woodridge Jubilee

### TRAINING

- SOP/Policy Review
- CE – CE Make up
- Quarterly Intubations
- Scenario Training



The Lisle-Woodridge Fire District had a total of 391 EMS calls for the month. Our primary type of care and transport was Advanced Life Support (ALS).



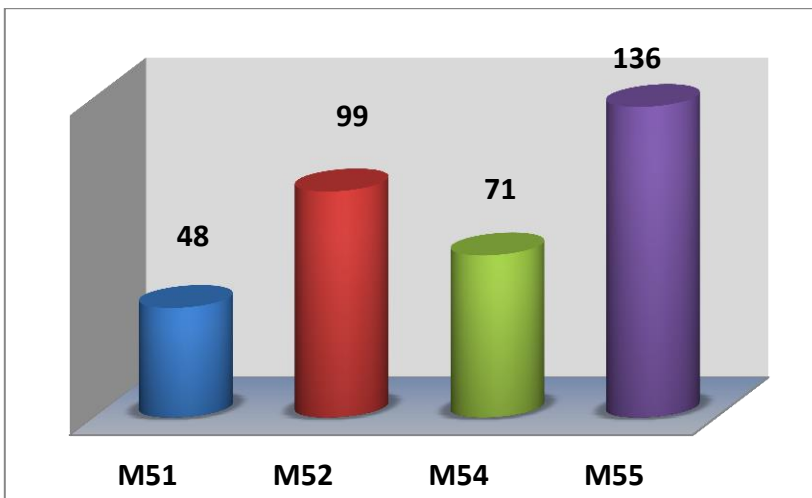
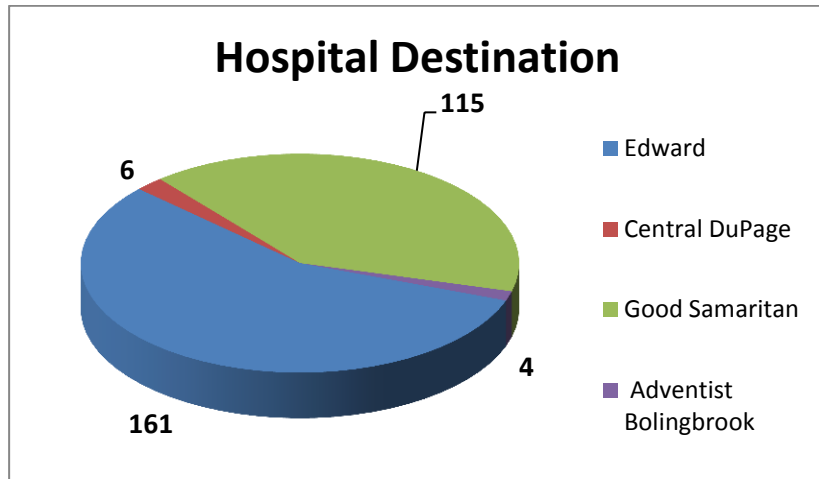
### Mutual Aid

Received	5	Given	5
----------	---	-------	---

### Top 5 Incident Types

Sick Person	43
Fall /Back Injury	42
Traffic Accidents	39
Unconscious/Fainting	35
Breathing Problems	33

Patients have the option to be transported to any of the four hospitals. Edward Hospital was our primary transport hospital with 161 transports.



M55 documented more calls again this month compared to M51 and M52. M54 is a jump company when M51 is not in service. These reports include Transport, Mutual Aid Transport, Refusal/DOA's, Medical Alert/Citizen Assist and Dispatch/Canceled En Route.

Our Non-Transport ALS vehicles documented a total of 37 EMS calls. These reports include Transport, Mutual Aid Transport, Refusal/DOA's, Medical Alert/Citizen Assist and Dispatch/Canceled En Route.

