

March 2014

Monthly Report



EMS Division

Medic Unit Activity

EMS Events

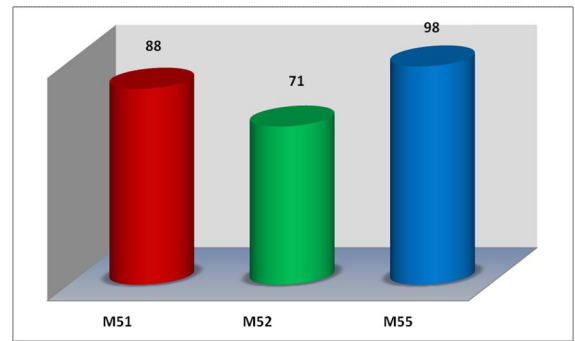
- Provided CPR class for residents.
- Zoll AutoPulse was placed into service on M55.

Traffic Accidents tops the list this month with 57 responses.

Medic 55 remained the busiest ambulance with the most transports.

Top 5 Incident Types

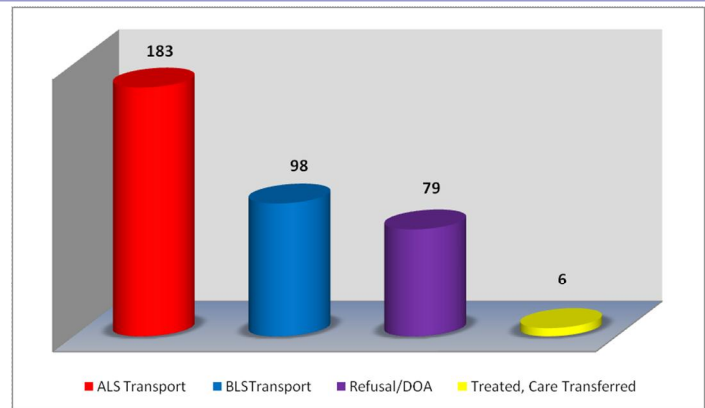
Traffic Accidents	57
Sick Person	50
Fall/Back Injury	46
Unconscious/Fainting	32
Psychiatric/Suicide Attempt	24



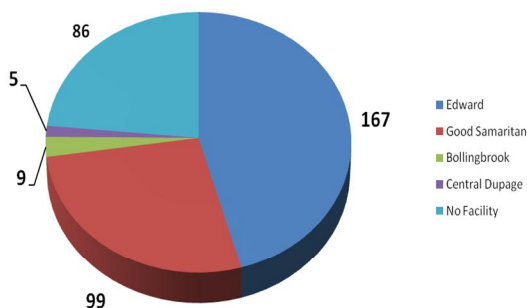
Outcome Summary

Our primary source of transports remain ALS. We transported 2 ALS patients other towns, and in return our Mutual Aid ambulances transported 6 of our patients.

Total number of transports for February: 366



Hospital Destination



Hospital Destination

Edward Hospital received the majority of our patients this month. This is based on patients request as to which hospital they would like transported to.

Training Topics

- **EHEMSS Training**
 - Sepsis
 - 1st QTR Intubations
- Zoll AutoPulse Training
- Conceal Carry Policy Training by Lisle Police Department