



# Lisle-Woodridge Fire Protection District Emergency Medical Services Division

James Weaver, EMS Coordinator

## May Report

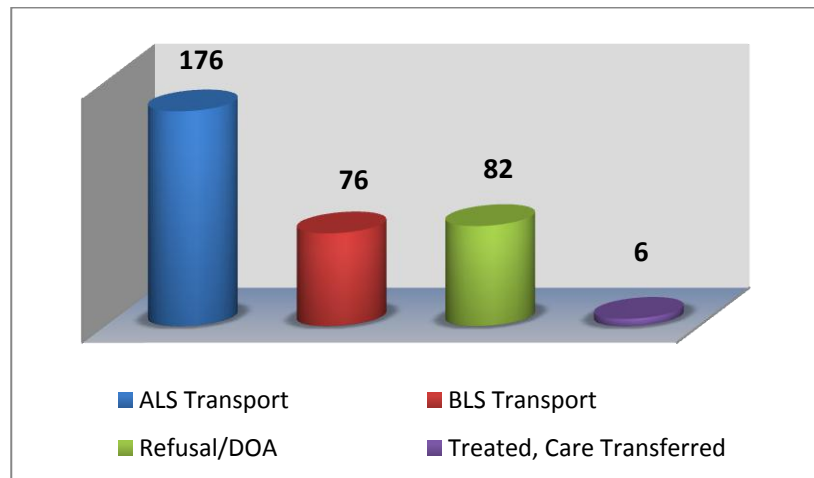
### EVENTS

- Medic hire back for Chicago Red Stars Soccer
- Medic hire back for Benedictine Commencement Ceremony
- CPR training for public

### TRAINING

- New Hire Training
- CE Make up
- Quarterly Intubations

Our primary type of care and transport was Advanced Life Support (ALS). We responded 1 time to other towns to assist them in transporting patients to the hospital. In return, they came and transported for us 6 times.

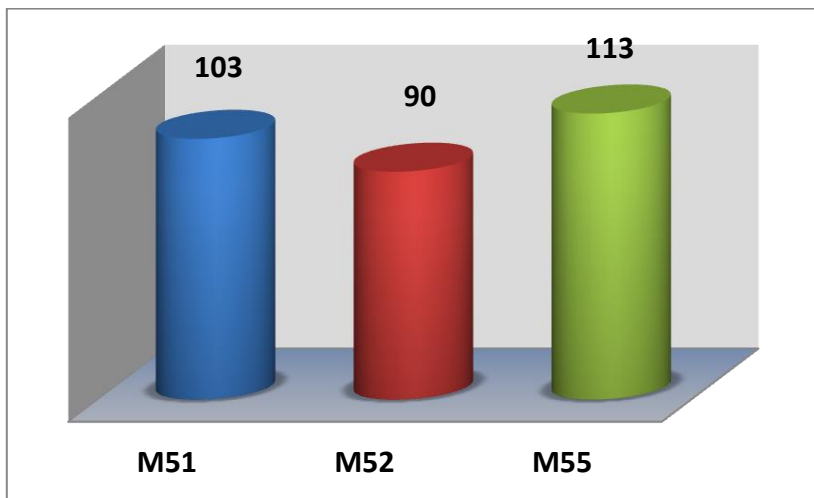
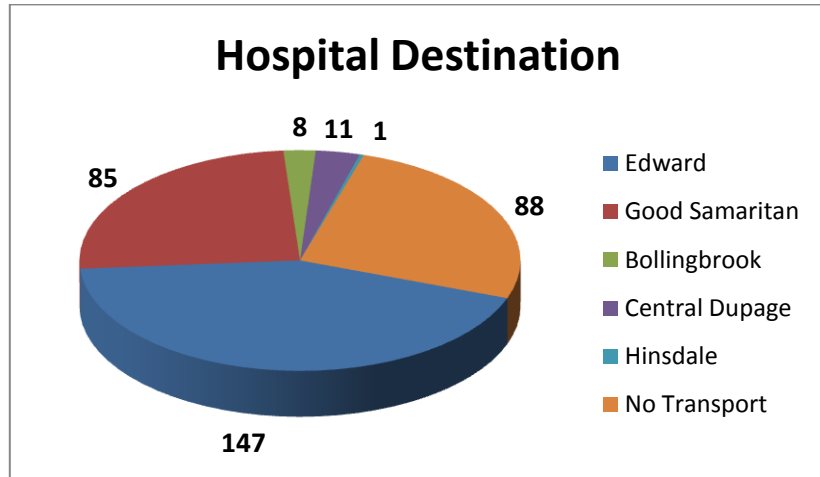


### Top 5 Incident Types

Traffic Accidents	56
Fall/Back Injury	44
Sick Person	41
Traumatic Injuries	30
Psychiatric/Suicide Attempt	23



Patients have the option to be transported to any of the four hospitals. Edward Hospital was our primary transport hospital with 147 transports. We did have 1 request and transport to Hinsdale Hospital which does occur in special situations.



M55 reported more calls once again this month compared to M51 and M52. These reports include Transport and Refusal/DOA.

Our Non-Transport ALS vehicles reported a total of 34 EMS calls. These calls were for Refusals, DOA's, Treated and Care Transferred.

