



Lisle-Woodridge Fire Protection District Emergency Medical Services Division

James Weaver, EMS Coordinator

May 2015

EVENTS

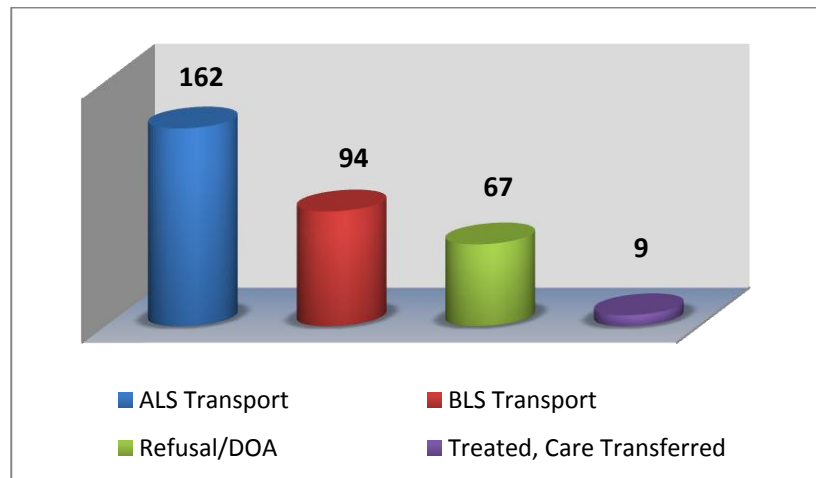
- Medic hire back for Chicago Red Stars Soccer
- Medic hire back for Benedictine Commencement Ceremony

TRAINING

- Spinal Motion Restriction
- Quarterly Intubations
- SOP/System policy daily training
- CE – Make-up



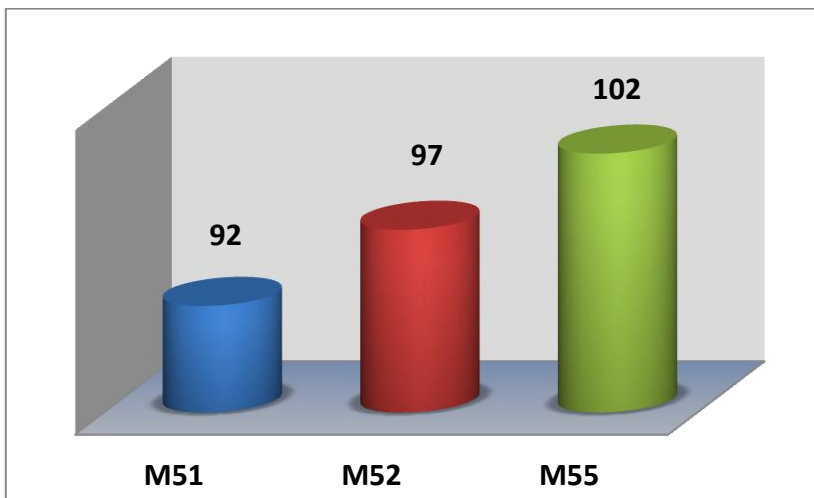
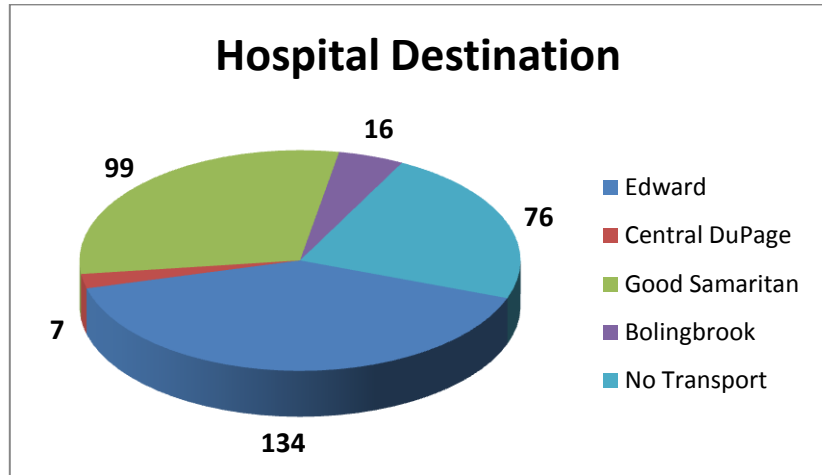
Our primary type of care and transport was Advanced Life Support (ALS). We responded 5 times to other towns to assist them in transporting patients to the hospital. In return, we had Mutual-Aid ambulances transport 9 times for us as all of our ambulances were committed to transporting patients.



Top 5 Incident Types

Traffic Accident	56
Sick Person	46
Fall /Back Injury	42
Psychiatric/Suicide Attempt	26
Breathing Problems	23

Patients have the option to be transported to any of the four hospitals. Edward Hospital was our primary transport hospital with 134 transports.



M55 documented more calls this month compared to M51 and M52. These reports include Transport, Mutual Aid Transport and Refusal/DOA's.

Our Non-Transport ALS vehicles documented a total of 41 EMS calls. These calls were for Refusals, DOA's, Treated and Care Transferred.

