



# Lisle-Woodridge Fire Protection District Emergency Medical Services Division

James Weaver, EMS Coordinator

## November 2014

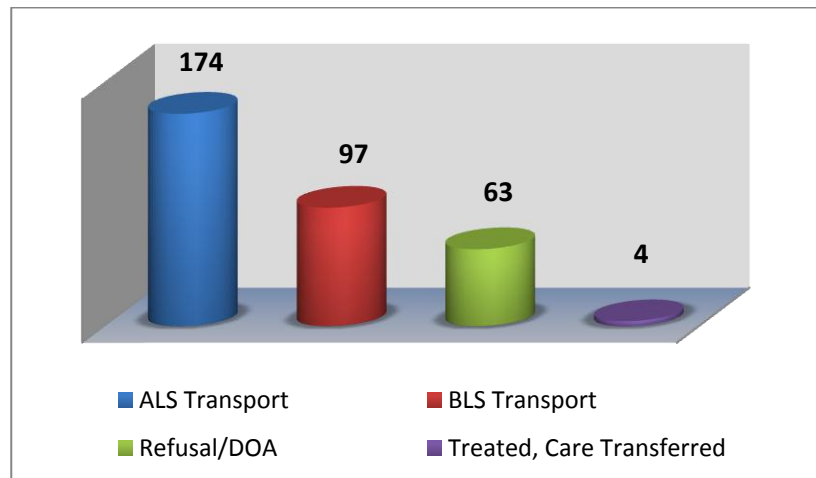
### EVENTS

- Medic hire back for College of DuPage Football
- Medic hire back for Benedictine Football
- Medic hire back for Arboretum 5K
- CPR training for the public

### TRAINING

- CE Make up
- Quarterly Intubations

Our primary type of care and transport was Advanced Life Support (ALS). We responded 2 times to other towns to assist them in transporting patients to the hospital. In return, they came and transported for us 4 times.

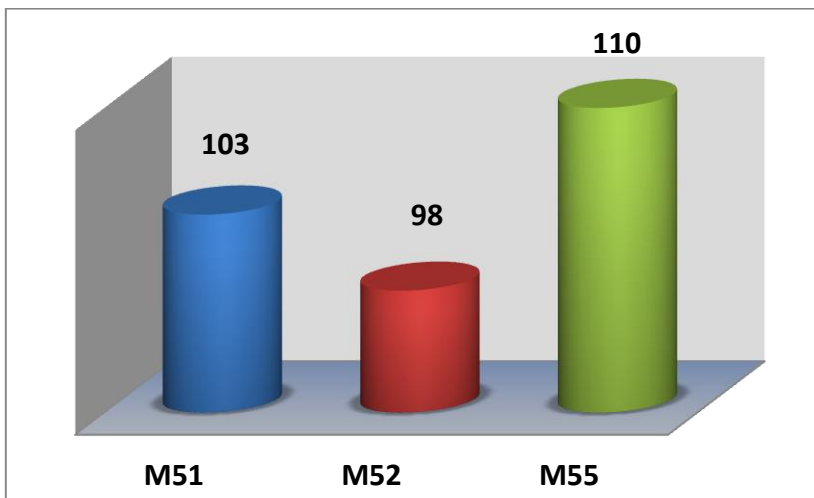
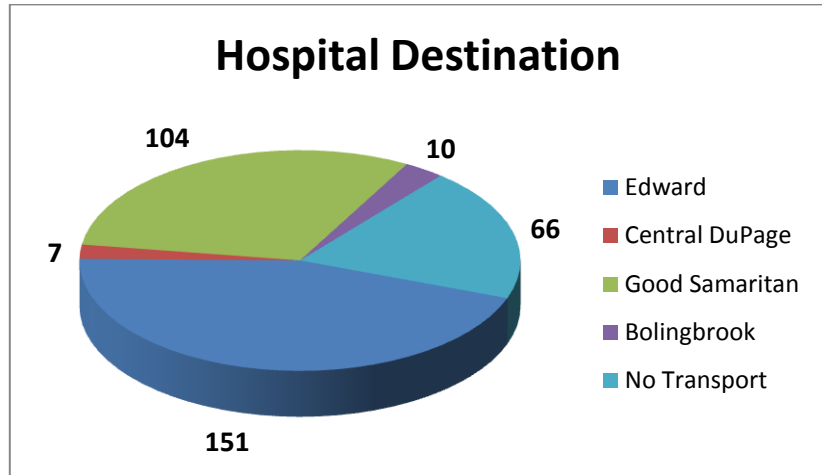


### Top 5 Incident Types

Fall /Back Injury	51
Traffic Accidents	41
Sick Person	41
Breathing Problems	27
Psychiatric/Suicide Attempt	24



Patients have the option to be transported to any of the four hospitals. Edward Hospital was our primary transport hospital with 151 transports.



M55 documented more calls this month compared to M51 and M52. These reports include Transport, Mutual Aid Transport and Refusal/DOA's.

Our Non-Transport ALS vehicles documented a total of 27 EMS calls. E53 responded to 1 call due to T53 being out of service. These calls were for Refusals, DOA's, Treated and Care Transferred.

