



# Lisle-Woodridge Fire Protection District Emergency Medical Services Division

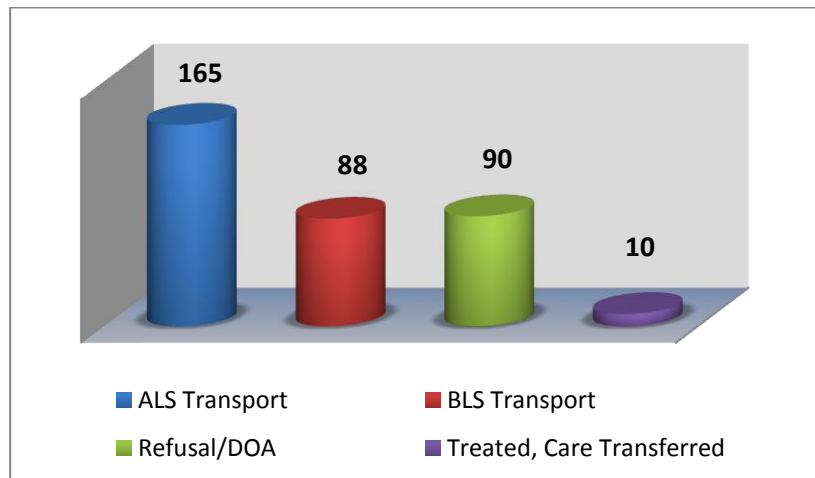
James Weaver, EMS Coordinator

## November 2015

### EVENTS

- Medic hire back for Benedictine Football
- Medic hire back for Glenbard South High School Varsity Football Game
- Turkey Trot 5K Duty crew standby

Our primary type of care and transport was Advanced Life Support (ALS). We responded 5 times to other towns to assist them in transporting patients to the hospital. In return, they came and transported for us 13 times due to our ambulances being on other emergency calls.



### TRAINING

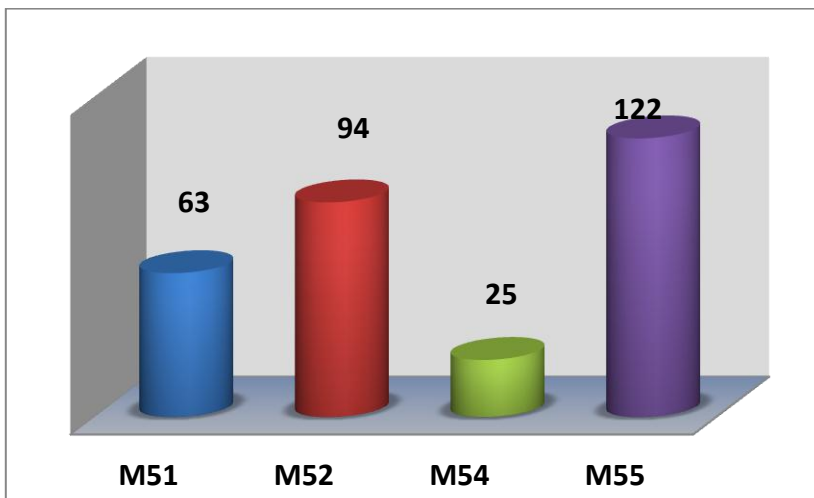
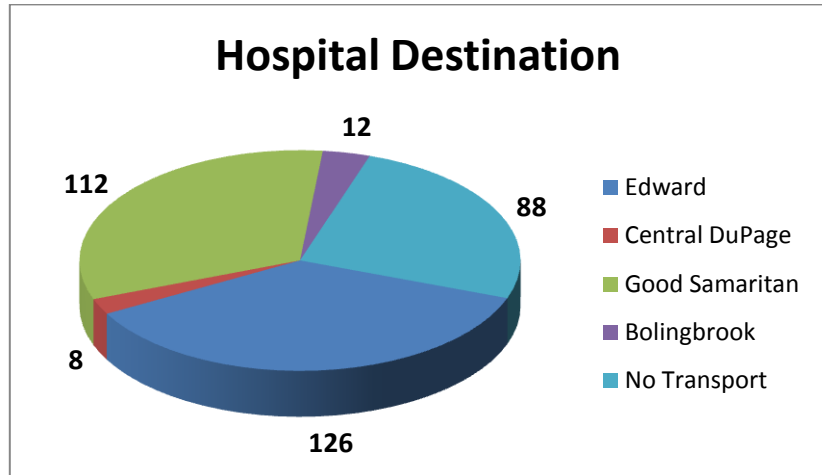
- CE Make up
- Quarterly Intubations



### Top 5 Incident Types

Fall /Back Injury	56
Traffic Accidents	54
Sick Person	30
Breathing Problems	29
Unconscious/Fainting	27

Patients have the option to be transported to any of the four hospitals. Edward Hospital was our primary transport hospital with 122 transports.



M55 documented more calls this month compared to M51 and M52. M54 is utilized as a Jump Company. These reports include Transport and Refusal/DOA.

Our Non-Transport ALS vehicles documented a total of 52 EMS calls. These calls were for Refusals, DOA's, Treated and Care Transferred.

