



# Lisle-Woodridge Fire Protection District Emergency Medical Services Division

James Weaver, EMS Coordinator

## October 2014

### EVENTS

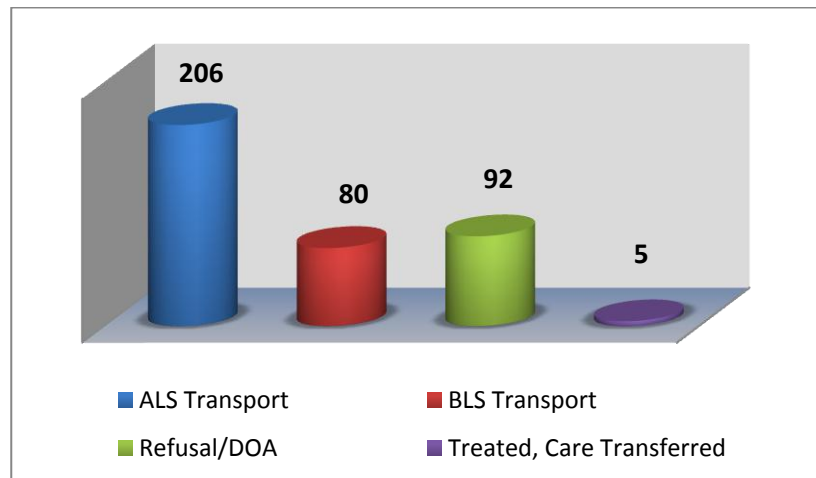
- Medic hire back for College of DuPage Football
- Medic hire back for Benedictine Football
- Medic hire back for Arboretum 5K
- Duty Crew standby for Lisle High School Football
- Duty Crew standby for Glenbard South High School Football
- Duty Crew standby for Benet Academy Football
- Duty Crew standby for Prairie State CERT competition at College of DuPage
- Duty Crew standby for Scarecrow Scramble 5K
- CPR training for the public

### TRAINING

- CE Make up
- Quarterly Intubations



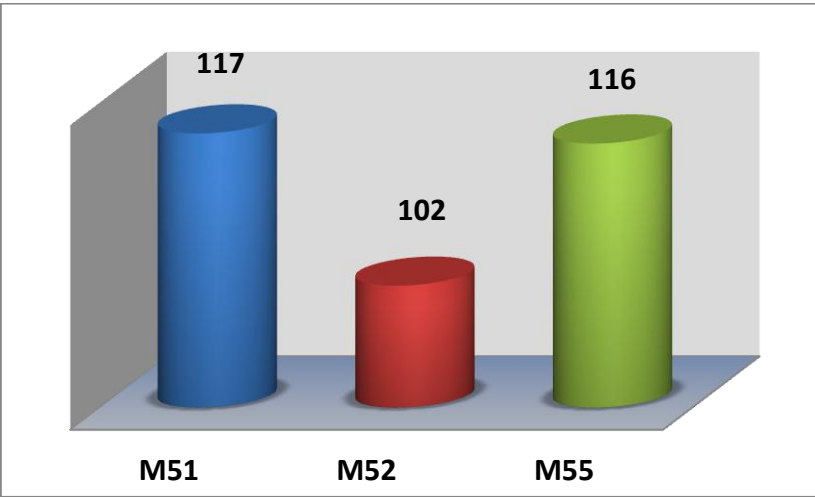
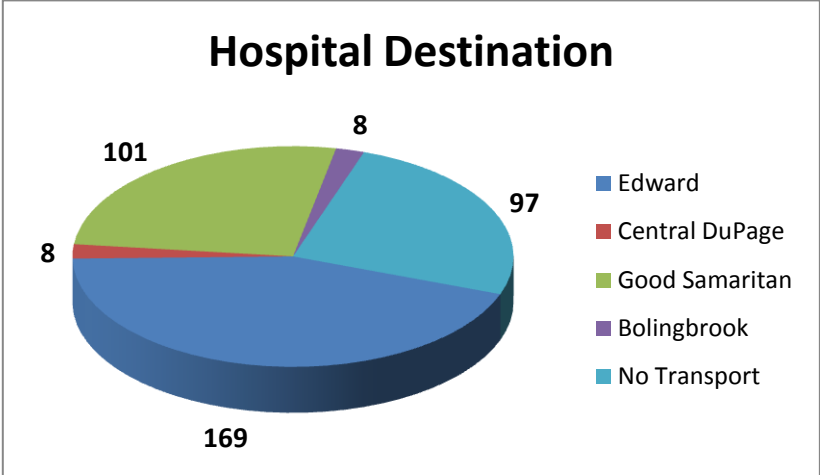
Our primary type of care and transport was Advanced Life Support (ALS). We responded 4 times to other towns to assist them in transporting patients to the hospital. In return, they came and transported for us 5 times.



### Top 5 Incident Types

Traffic Accidents	70
Fall /Back Injury	46
Sick Person	43
Unconscious/Fainting	30
Psychiatric/Suicide Attempt	27

Patients have the option to be transported to any of the four hospitals. Edward Hospital was our primary transport hospital with 169 transports.



M51 documented more calls this month compared to M52 and M55. These reports include Transport, Mutual Aid Transport and Refusal/DOA's.

Our Non-Transport ALS vehicles documented a total of 48 EMS calls. E53 responded to 6 calls due to T53 being out of service. These calls were for Refusals, DOA's, Treated and Care Transferred.

