



Lisle-Woodridge Fire Protection District Emergency Medical Services Division

James Weaver, EMS Coordinator

October 2015

EVENTS

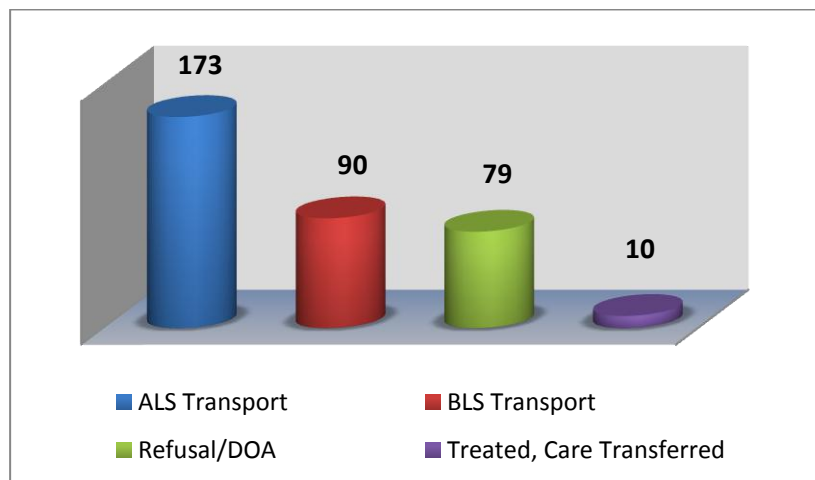
- Medic hire back for College of DuPage Football
- Medic hire back for Benedictine Football
- Medic hire back for Glenbard South High School Freshman / Sophomore / Varsity Football Games
- Medic hire back for Morton Arboretum 5K
- Duty Crew standby for Lisle High School Freshman/Sophomore /Varsity Football Games
- Duty Crew standby for Benet Academy Football Games

TRAINING

- CE – Behavioral Health
- CE Make up
- Quarterly Intubations



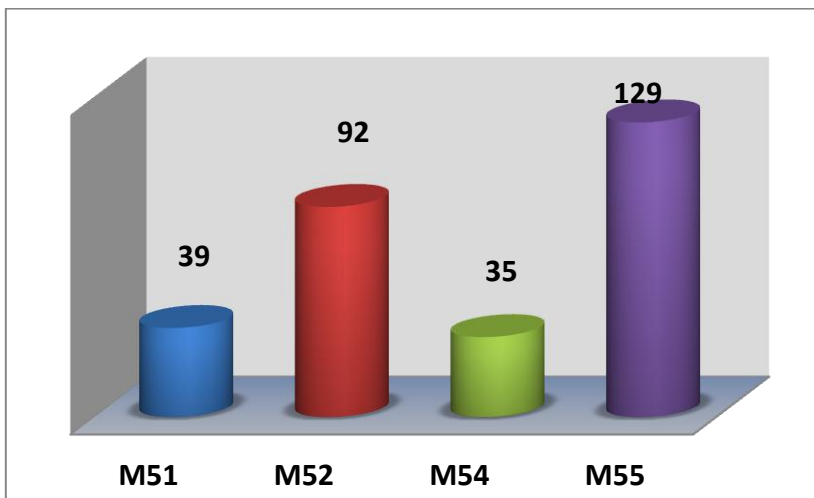
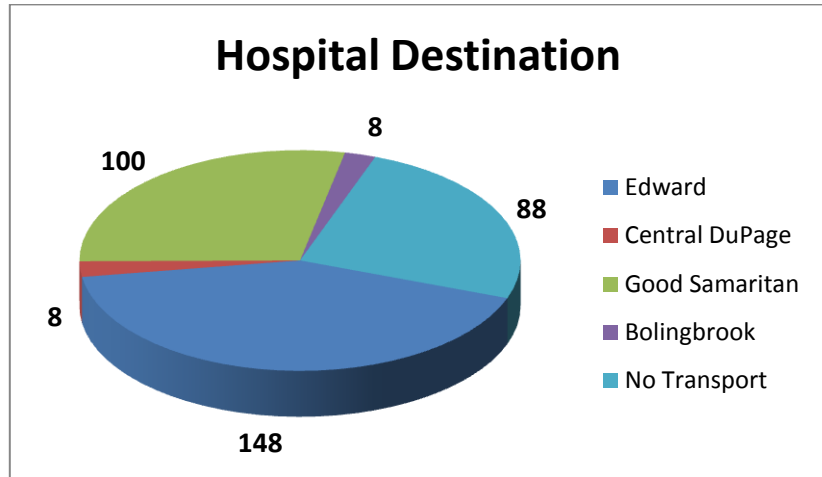
Our primary type of care and transport was Advanced Life Support (ALS). We responded 4 times to other towns to assist them in transporting patients to the hospital. In return, they came and transported for us 10 times due to our ambulances being on other emergency calls.



Top 5 Incident Types

Traffic Accidents	49
Sick Person	41
Fall /Back Injury	41
Psychiatric/Suicide Attempt	37
Breathing Problems	31

Patients have the option to be transported to any of the four hospitals. Edward Hospital was our primary transport hospital with 148 transports.



M55 documented more calls this month compared to M51 and M52. M54 is utilized as a Jump Company. These reports include Transport and Refusal/DOA.

Our Non-Transport ALS vehicles documented a total of 43 EMS calls. These calls were for Refusals, DOA's, Treated and Care Transferred.

