



Lisle-Woodridge Fire Protection District Emergency Medical Services Division

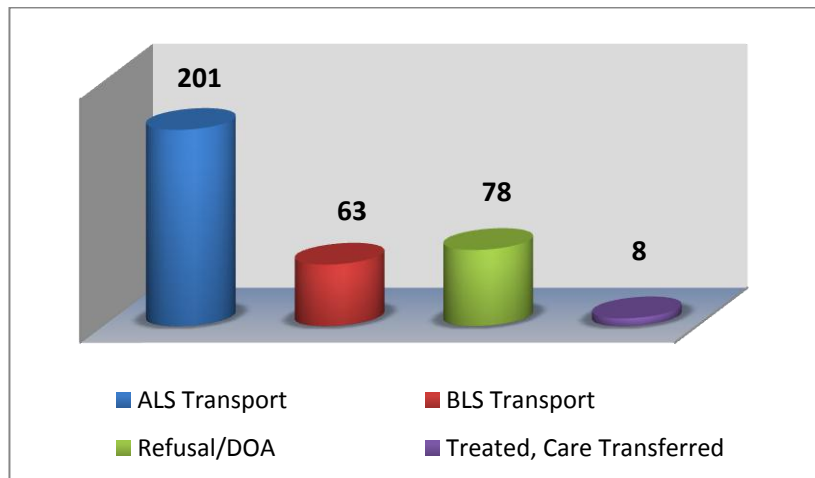
James Weaver, EMS Coordinator

September 2014

EVENTS

- Medic hire back for College of DuPage Football
- Medic hire back for Benedictine Football
- Duty Crew standby for Lisle High School Freshman/Sophomore /Varsity Football Games
- Duty Crew standby for Glenbard South High School Freshman / Sophomore / Varsity Football Games
- Duty Crew standby for Benet Academy Football Games
- CPR training for the public

Our primary type of care and transport was Advanced Life Support (ALS). We did not have any requests from other towns this month to help them treat and transport patients to the hospital. We did require other towns to transport 8 patients for us due to all three of our ambulances being on other calls.



TRAINING

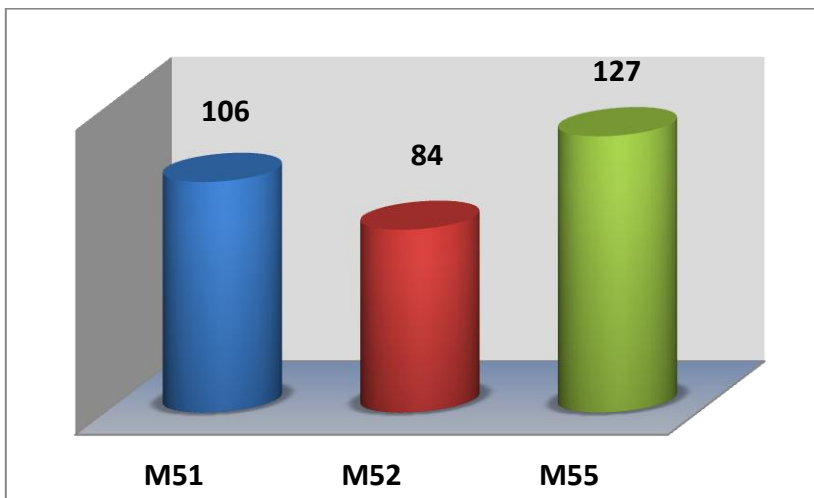
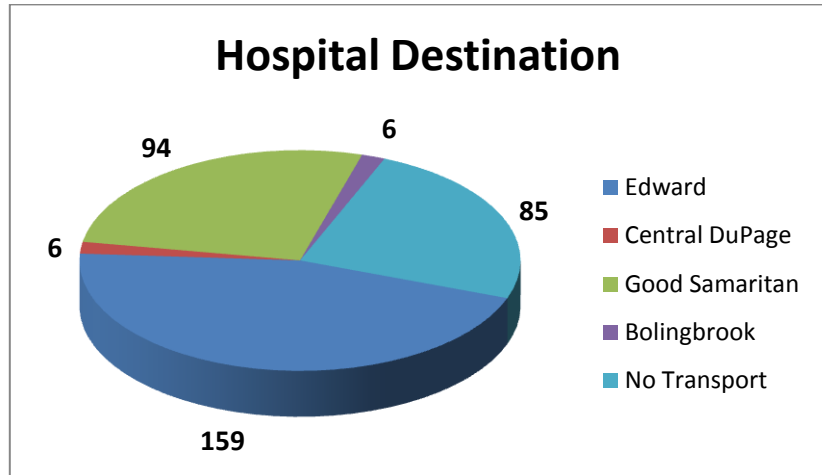
- CE – Kinematics and Spine Injuries
- CE Make up
- Quarterly Intubations



Top 5 Incident Types

Sick Person	46
Traffic Accidents	45
Fall /Back Injury	38
Breathing Problems	36
Psychiatric/Suicide Attempt	27

Patients have the option to be transported to any of the four hospitals. Edward Hospital was our primary transport hospital with 159 transports.



M55 documented more calls this month compared to M51 and M52. These reports include Transport and Refusal/DOA.

Our Non-Transport ALS vehicles documented a total of 32 EMS calls. These calls were for Refusals, DOA's, Treated and Care Transferred.

