



Lisle-Woodridge Fire Protection District Emergency Medical Services Division

James Weaver, EMS Coordinator

September 2015

EVENTS

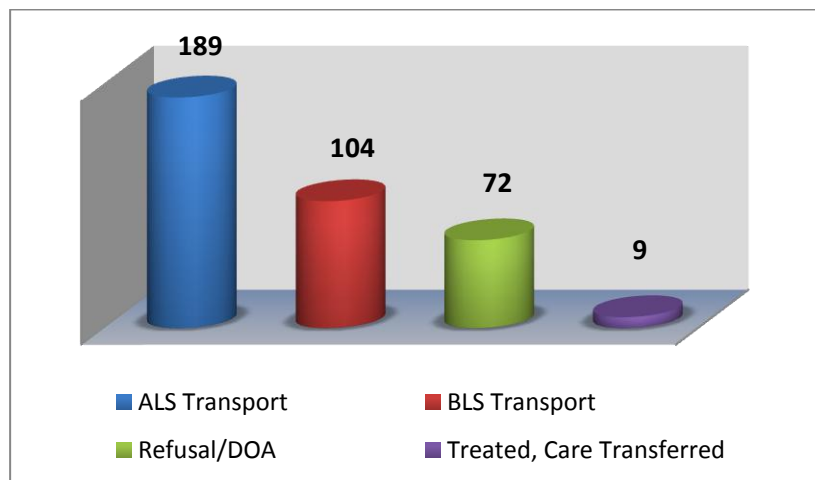
- Medic hire back for College of DuPage Football
- Medic hire back for Benedictine Football
- Medic hire back for Glenbard South High School Freshman / Sophomore / Varsity Football Games
- Duty Crew standby for Lisle High School Freshman/Sophomore /Varsity Football Games
- Duty Crew standby for Benet Academy Football Games
- Duty Crew standby for Barkapalooza Dog Walk and Pet Expo

TRAINING

- CE – Respiratory Emergencies
- CE Make up
- Quarterly Intubations



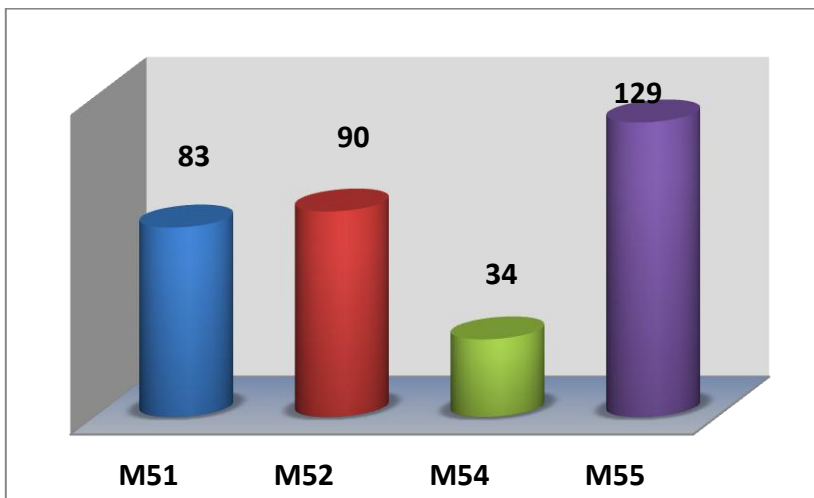
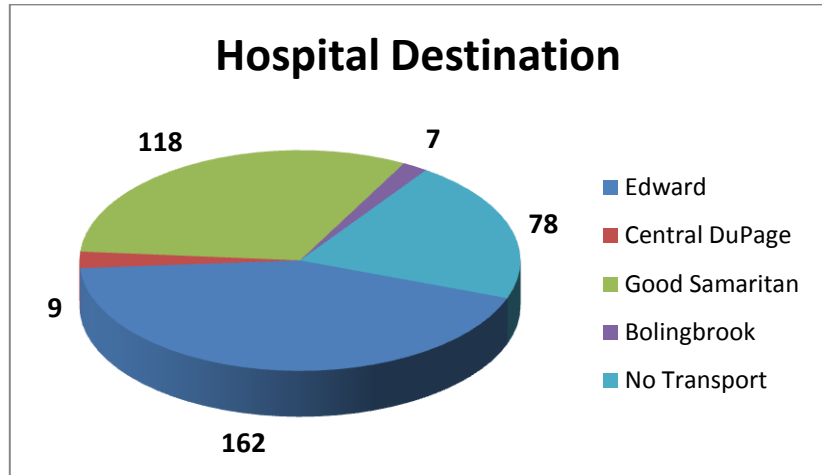
Our primary type of care and transport was Advanced Life Support (ALS). We responded 4 times to other towns to assist them in transporting patients to the hospital. In return, they came and transported for us 9 times due to our ambulances being on other emergency calls.



Top 5 Incident Types

Traffic Accidents	52
Sick Person	43
Fall /Back Injury	43
Psychiatric/Suicide Attempt	30
Breathing Problems	29

Patients have the option to be transported to any of the four hospitals. Edward Hospital was our primary transport hospital with 162 transports.



M55 documented more calls this month compared to M51 and M52. M54 is utilized as a Jump Company. These reports include Transport and Refusal/DOA.

Our Non-Transport ALS vehicles documented a total of 38 EMS calls. These calls were for Refusals, DOA's, Treated and Care Transferred.

